

TROVE2 Antibody (C-term)

Affinity Purified Rabbit Polyclonal Antibody (Pab)

Catalog # AP17234b

Product Information

Application	WB, E
Primary Accession	P10155
Other Accession	O08848 , NP_001035828.1 , NP_001166995.1
Reactivity	Human
Predicted	Mouse
Host	Rabbit
Clonality	Polyclonal
Isotype	Rabbit IgG
Clone Names	RB36981
Calculated MW	60671
Antigen Region	467-495

Additional Information

Gene ID	6738
Other Names	60 kDa SS-A/Ro ribonucleoprotein, 60 kDa Ro protein, 60 kDa ribonucleoprotein Ro, RoRNP, Ro 60 kDa autoantigen, Sjogren syndrome antigen A2, Sjogren syndrome type A antigen, SS-A, TROVE domain family member 2, TROVE2, RO60, SSA2
Target/Specificity	This TROVE2 antibody is generated from rabbits immunized with a KLH conjugated synthetic peptide between 467-495 amino acids from the C-terminal region of human TROVE2.
Dilution	WB~~1:1000 E~~Use at an assay dependent concentration.
Format	Purified polyclonal antibody supplied in PBS with 0.09% (W/V) sodium azide. This antibody is purified through a protein A column, followed by peptide affinity purification.
Storage	Maintain refrigerated at 2-8°C for up to 2 weeks. For long term storage store at -20°C in small aliquots to prevent freeze-thaw cycles.
Precautions	TROVE2 Antibody (C-term) is for research use only and not for use in diagnostic or therapeutic procedures.

Protein Information

Name	RO60 (HGNC:11313)
-------------	-------------------------------------

Function RNA-binding protein that binds to misfolded non-coding RNAs, pre-5S rRNA, and several small cytoplasmic RNA molecules known as Y RNAs (PubMed:[18056422](#), PubMed:[26382853](#)). Binds to endogenous Alu retroelements which are induced by type I interferon and stimulate proinflammatory cytokine secretion (PubMed:[26382853](#)). Regulates the expression of Alu retroelements as well as inflammatory genes (PubMed:[26382853](#)). May play roles in cilia formation and/or maintenance (By similarity).

Cellular Location Cytoplasm. Note=Localized in cytoplasmic mRNP granules containing untranslated mRNAs.

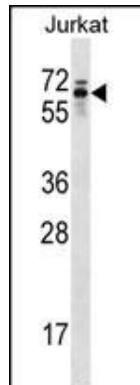
Background

RNA-binding protein that binds to several small cytoplasmic RNA molecules known as Y RNAs. May stabilize these RNAs from degradation.

References

Reed, J.H., et al. Arthritis Rheum. 62(5):1448-1456(2010)
Davila, S., et al. Genes Immun. 11(3):232-238(2010)
Clancy, R.M., et al. J. Immunol. 184(4):2148-2155(2010)
Reed, J.H., et al. Arthritis Rheum. 60(3):860-869(2009)
Barcellos, K.S., et al. J. Rheumatol. 34(6):1283-1292(2007)

Images



TROVE2 Antibody (C-term) (Cat. #AP17234b) western blot analysis in Jurkat cell line lysates (35ug/lane). This demonstrates the TROVE2 antibody detected the TROVE2 protein (arrow).

Please note: All products are 'FOR RESEARCH USE ONLY. NOT FOR USE IN DIAGNOSTIC OR THERAPEUTIC PROCEDURES'.