

HEBP1 Antibody (N-term)

Affinity Purified Rabbit Polyclonal Antibody (Pab)

Catalog # AP17264a

Product Information

Application	WB, E
Primary Accession	Q9NRV9
Other Accession	NP_057071.2
Reactivity	Human
Host	Rabbit
Clonality	Polyclonal
Isotype	Rabbit IgG
Clone Names	RB37261
Calculated MW	21097
Antigen Region	5-32

Additional Information

Gene ID	50865
Other Names	Heme-binding protein 1, p22HBP, HEBP1, HBP
Target/Specificity	This HEBP1 antibody is generated from rabbits immunized with a KLH conjugated synthetic peptide between 5-32 amino acids from the N-terminal region of human HEBP1.
Dilution	WB~~1:1000 E~~Use at an assay dependent concentration.
Format	Purified polyclonal antibody supplied in PBS with 0.09% (W/V) sodium azide. This antibody is purified through a protein A column, followed by peptide affinity purification.
Storage	Maintain refrigerated at 2-8°C for up to 2 weeks. For long term storage store at -20°C in small aliquots to prevent freeze-thaw cycles.
Precautions	HEBP1 Antibody (N-term) is for research use only and not for use in diagnostic or therapeutic procedures.

Protein Information

Name	HEBP1
Synonyms	HBP
Function	May bind free porphyrinogens that may be present in the cell and thus facilitate removal of these potentially toxic compound. Binds with a high

affinity to one molecule of heme or porphyrins. It binds metalloporphyrins, free porphyrins and N-methylprotoporphyrin with similar affinities.

Cellular Location Cytoplasm.

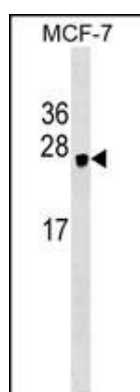
Background

The full-length protein encoded by this gene is an intracellular tetrapyrrole-binding protein. This protein includes a natural chemoattractant peptide of 21 amino acids at the N-terminus, which is a natural ligand for formyl peptide receptor-like receptor 2 (FPRL2) and promotes calcium mobilization and chemotaxis in monocytes and dendritic cells. [provided by RefSeq].

References

Bailey, S.D., et al. Diabetes Care 33(10):2250-2253(2010)
Rose, J.E., et al. Mol. Med. 16 (7-8), 247-253 (2010) :
Talmud, P.J., et al. Am. J. Hum. Genet. 85(5):628-642(2009)
Lambert, N.A. Sci Signal 1 (25), RE5 (2008) :
Gao, J.L., et al. J. Immunol. 178(3):1450-1456(2007)

Images



HEBP1 Antibody (N-term) (Cat. #AP17264a) western blot analysis in MCF-7 cell line lysates (35ug/lane). This demonstrates the HEBP1 antibody detected the HEBP1 protein (arrow).

Please note: All products are 'FOR RESEARCH USE ONLY. NOT FOR USE IN DIAGNOSTIC OR THERAPEUTIC PROCEDURES'.