

MYBPC1 Antibody (Center)

Affinity Purified Rabbit Polyclonal Antibody (Pab)

Catalog # AP17294c

Product Information

Application	WB, E
Primary Accession	Q00872
Other Accession	NP_002456.2 , NP_996555.1
Reactivity	Human
Host	Rabbit
Clonality	Polyclonal
Isotype	Rabbit IgG
Clone Names	RB36716
Calculated MW	128294
Antigen Region	750-778

Additional Information

Gene ID	4604
Other Names	Myosin-binding protein C, slow-type, Slow MyBP-C, C-protein, skeletal muscle slow isoform, MYBPC1, MYBPCS
Target/Specificity	This MYBPC1 antibody is generated from rabbits immunized with a KLH conjugated synthetic peptide between 750-778 amino acids from the Central region of human MYBPC1.
Dilution	WB~~1:1000 E~~Use at an assay dependent concentration.
Format	Purified polyclonal antibody supplied in PBS with 0.09% (W/V) sodium azide. This antibody is purified through a protein A column, followed by peptide affinity purification.
Storage	Maintain refrigerated at 2-8°C for up to 2 weeks. For long term storage store at -20°C in small aliquots to prevent freeze-thaw cycles.
Precautions	MYBPC1 Antibody (Center) is for research use only and not for use in diagnostic or therapeutic procedures.

Protein Information

Name	MYBPC1
Synonyms	MYBPCS
Function	Thick filament-associated protein located in the crossbridge region of

vertebrate striated muscle a bands. Slow skeletal protein that binds to both myosin and actin (PubMed:[31025394](#), PubMed:[31264822](#)). In vitro, binds to native thin filaments and modifies the activity of actin-activated myosin ATPase. May modulate muscle contraction or may play a more structural role.

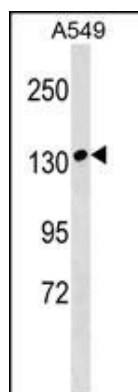
Background

Thick filament-associated protein located in the crossbridge region of vertebrate striated muscle a bands. In vitro it binds MHC, F-actin and native thin filaments, and modifies the activity of actin-activated myosin ATPase. It may modulate muscle contraction or may play a more structural role.

References

Bailey, S.D., et al. Diabetes Care 33(10):2250-2253(2010)
Rose, J.E., et al. Mol. Med. 16 (7-8), 247-253 (2010) :
Gurnett, C.A., et al. Hum. Mol. Genet. 19(7):1165-1173(2010)
Talmud, P.J., et al. Am. J. Hum. Genet. 85(5):628-642(2009)
Flashman, E., et al. Biochem. J. 401(1):97-102(2007)

Images



MYBPC1 Antibody (Center) (Cat. #AP17294c) western blot analysis in A549 cell line lysates (35ug/lane). This demonstrates the MYBPC1 antibody detected the MYBPC1 protein (arrow).

Please note: All products are 'FOR RESEARCH USE ONLY. NOT FOR USE IN DIAGNOSTIC OR THERAPEUTIC PROCEDURES'.