

# KLHL12 Antibody (C-term)

Affinity Purified Rabbit Polyclonal Antibody (Pab)

Catalog # AP17327b

## Product Information

---

Application	WB, E
Primary Accession	<a href="#">Q53G59</a>
Other Accession	<a href="#">Q6NRH0</a> , <a href="#">Q8R2H4</a> , <a href="#">Q8BZM0</a> , <a href="#">Q5U374</a> , <a href="#">E1B932</a> , <a href="#">NP_067646.1</a>
Reactivity	Human, Mouse
Predicted	Bovine, Zebrafish, Rat, Xenopus
Host	Rabbit
Clonality	Polyclonal
Isotype	Rabbit IgG
Clone Names	RB37184
Calculated MW	63277
Antigen Region	376-404

## Additional Information

---

Gene ID	59349
Other Names	Kelch-like protein 12, CUL3-interacting protein 1, DKIR homolog, hDKIR, KLHL12, C3IP1
Target/Specificity	This KLHL12 antibody is generated from rabbits immunized with a KLH conjugated synthetic peptide between 376-404 amino acids from the C-terminal region of human KLHL12.
Dilution	WB~~1:1000 E~~Use at an assay dependent concentration.
Format	Purified polyclonal antibody supplied in PBS with 0.09% (W/V) sodium azide. This antibody is purified through a protein A column, followed by peptide affinity purification.
Storage	Maintain refrigerated at 2-8°C for up to 2 weeks. For long term storage store at -20°C in small aliquots to prevent freeze-thaw cycles.
Precautions	KLHL12 Antibody (C-term) is for research use only and not for use in diagnostic or therapeutic procedures.

## Protein Information

---

Name	KLHL12
Synonyms	C3IP1 {ECO:0000303   Ref.1}

<b>Function</b>	Substrate-specific adapter of a BCR (BTB-CUL3-RBX1) E3 ubiquitin ligase complex that acts as a negative regulator of Wnt signaling pathway and ER-Golgi transport (PubMed: <a href="#">22358839</a> , PubMed: <a href="#">27565346</a> ). The BCR(KLHL12) complex is involved in ER-Golgi transport by regulating the size of COPII coats, thereby playing a key role in collagen export, which is required for embryonic stem (ES) cells division: BCR(KLHL12) acts by mediating monoubiquitination of SEC31 (SEC31A or SEC31B) (PubMed: <a href="#">22358839</a> , PubMed: <a href="#">27565346</a> ). The BCR(KLHL12) complex is also involved in neural crest specification: in response to cytosolic calcium increase, interacts with the heterodimer formed with PEF1 and PDCD6/ALG-2, leading to bridge together the BCR(KLHL12) complex and SEC31 (SEC31A or SEC31B), promoting monoubiquitination of SEC31 and subsequent collagen export (PubMed: <a href="#">27716508</a> ). As part of the BCR(KLHL12) complex, also acts as a negative regulator of the Wnt signaling pathway by mediating ubiquitination and subsequent proteolysis of DVL3 (PubMed: <a href="#">16547521</a> ). The BCR(KLHL12) complex also mediates polyubiquitination of DRD4 and PEF1, without leading to degradation of these proteins (PubMed: <a href="#">18303015</a> , PubMed: <a href="#">20100572</a> , PubMed: <a href="#">27716508</a> ).
<b>Cellular Location</b>	Cytoplasmic vesicle, COPII-coated vesicle
<b>Tissue Location</b>	Ubiquitously expressed. Highly expressed in testis and at lower levels in the submandibular salivary gland

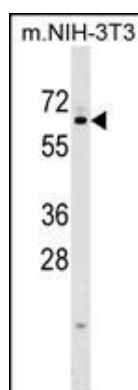
## Background

Serves as a substrate-specific adapter for the CUL3-based ubiquitin-protein E3 ligase complex. Negatively regulates the Wnt signaling pathway via the targeted ubiquitination and subsequent proteolysis of DVL3.

## References

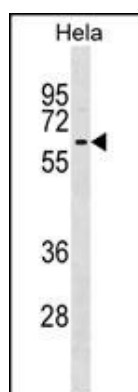
Ehret, G.B., et al. Eur. J. Hum. Genet. 17(12):1650-1657(2009)  
Rondou, P., et al. J. Biol. Chem. 283(17):11083-11096(2008)  
Lim, J., et al. Cell 125(4):801-814(2006)  
Angers, S., et al. Nat. Cell Biol. 8(4):348-357(2006)  
Uchida, K., et al. Immunology 116(1):53-63(2005)

## Images



KLHL12 Antibody (C-term) (Cat. #AP17327b) western blot analysis in mouse NIH-3T3 cell line lysates (35ug/lane). This demonstrates the KLHL12 antibody detected the KLHL12 protein (arrow).

KLHL12 Antibody (C-term) (Cat. #AP17327b) western blot analysis in Hela cell line lysates (35ug/lane). This demonstrates the KLHL12 antibody detected the KLHL12 protein (arrow).



Please note: All products are 'FOR RESEARCH USE ONLY. NOT FOR USE IN DIAGNOSTIC OR THERAPEUTIC PROCEDURES'.