

RHOT2 Antibody (Center)

Affinity Purified Rabbit Polyclonal Antibody (Pab)

Catalog # AP17330c

Product Information

Application	WB, E
Primary Accession	Q8IXI1
Other Accession	NP_620124.1
Reactivity	Human
Host	Rabbit
Clonality	Polyclonal
Isotype	Rabbit IgG
Clone Names	RB37194
Calculated MW	68118
Antigen Region	291-320

Additional Information

Gene ID	89941
Other Names	Mitochondrial Rho GTPase 2, MIRO-2, hMiro-2, 365-, Ras homolog gene family member T2, RHOT2, ARHT2, C16orf39
Target/Specificity	This RHOT2 antibody is generated from rabbits immunized with a KLH conjugated synthetic peptide between 291-320 amino acids from the Central region of human RHOT2.
Dilution	WB~~1:1000 E~~Use at an assay dependent concentration.
Format	Purified polyclonal antibody supplied in PBS with 0.09% (W/V) sodium azide. This antibody is purified through a protein A column, followed by peptide affinity purification.
Storage	Maintain refrigerated at 2-8°C for up to 2 weeks. For long term storage store at -20°C in small aliquots to prevent freeze-thaw cycles.
Precautions	RHOT2 Antibody (Center) is for research use only and not for use in diagnostic or therapeutic procedures.

Protein Information

Name	RHOT2
Synonyms	ARHT2, C16orf39
Function	Atypical mitochondrial nucleoside-triphosphatase (NTPase) involved in

mitochondrial trafficking (PubMed:[16630562](#), PubMed:[22396657](#), PubMed:[30513825](#)). Probably involved in control of anterograde transport of mitochondria and their subcellular distribution (PubMed:[22396657](#)). Can hydrolyze GTP (By similarity). Can hydrolyze ATP and UTP (PubMed:[30513825](#)).

Cellular Location Mitochondrion outer membrane; Single-pass type IV membrane protein. Note=Colocalizes with MGARP and RHOT2 at the mitochondria

Tissue Location Ubiquitously expressed. Highly expressed in heart, liver, skeletal muscle, kidney and pancreas

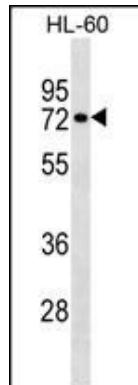
Background

Mitochondrial GTPase involved in mitochondrial trafficking. Probably involved in control of anterograde transport of mitochondria and their subcellular distribution (By similarity).

References

Saotome, M., et al. Proc. Natl. Acad. Sci. U.S.A. 105(52):20728-20733(2008)
Fransson, S., et al. Biochem. Biophys. Res. Commun. 344(2):500-510(2006)
Colland, F., et al. Genome Res. 14(7):1324-1332(2004)
Aspenstrom, P., et al. Biochem. J. 377 (PT 2), 327-337 (2004) :
Shan, Y., et al. Cytogenet. Genome Res. 106(1):91-97(2004)

Images



RHOT2 Antibody (Center) (Cat. #AP17330c) western blot analysis in HL-60 cell line lysates (35ug/lane). This demonstrates the RHOT2 antibody detected the RHOT2 protein (arrow).

Please note: All products are 'FOR RESEARCH USE ONLY. NOT FOR USE IN DIAGNOSTIC OR THERAPEUTIC PROCEDURES'.