

# ANP32C Antibody (Center)

Affinity Purified Rabbit Polyclonal Antibody (Pab)  
Catalog # AP17348c

## Product Information

---

<b>Application</b>	WB, E
<b>Primary Accession</b>	<a href="#">O43423</a>
<b>Other Accession</b>	<a href="#">NP_036535.1</a>
<b>Reactivity</b>	Human
<b>Host</b>	Rabbit
<b>Clonality</b>	Polyclonal
<b>Isotype</b>	Rabbit IgG
<b>Clone Names</b>	RB37230
<b>Calculated MW</b>	26762
<b>Antigen Region</b>	130-158

## Additional Information

---

<b>Other Names</b>	Acidic leucine-rich nuclear phosphoprotein 32 family member C, Phosphoprotein 32-related protein 1, Tumorigenic protein pp32r1, ANP32C, PP32R1
<b>Target/Specificity</b>	This ANP32C antibody is generated from rabbits immunized with a KLH conjugated synthetic peptide between 130-158 amino acids from the Central region of human ANP32C.
<b>Dilution</b>	WB~~1:1000 E~~Use at an assay dependent concentration.
<b>Format</b>	Purified polyclonal antibody supplied in PBS with 0.09% (W/V) sodium azide. This antibody is purified through a protein A column, followed by peptide affinity purification.
<b>Storage</b>	Maintain refrigerated at 2-8°C for up to 2 weeks. For long term storage store at -20°C in small aliquots to prevent freeze-thaw cycles.
<b>Precautions</b>	ANP32C Antibody (Center) is for research use only and not for use in diagnostic or therapeutic procedures.

## Protein Information

---

<b>Name</b>	ANP32CP ( <a href="#">HGNC:16675</a> )
<b>Synonyms</b>	PP32R1
<b>Tissue Location</b>	Expressed in activated stem cells, such as mobilized CD34+ cells and cord blood CD34+ cells, but not in resting bone marrow CD34+ cells. Expressed in a

variety of neoplastic cell lines, mainly in prostatic adenocarcinoma cell lines.  
Not expressed in normal prostatic tissue.

## Background

---

Phosphoprotein 32 (PP32) is a tumor suppressor that can inhibit several types of cancers, including prostate and breast cancers. The protein encoded by this gene is one of at least two proteins that are similar in amino acid sequence to PP32 and are part of the same acidic nuclear phosphoprotein gene family. However, unlike PP32, the encoded protein is tumorigenic. The tumor suppressor function of PP32 has been localized to a 25 amino acid region that is divergent between PP32 and the protein encoded by this gene. This gene does not contain introns. [provided by RefSeq].

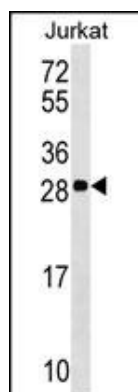
## References

---

Matilla, A., et al. *Cerebellum* 4(1):7-18(2005)  
Kochevar, G.J., et al. *Hum. Mutat.* 23(6):546-551(2004)  
Fan, Z., et al. *Nat. Immunol.* 4(2):145-153(2003)  
Kadkol, S.S., et al. *Breast Cancer Res. Treat.* 68(1):65-73(2001)  
Kadkol, S.S., et al. *Nat. Med.* 5 (9), 1087 (1999) :

## Images

---



ANP32C Antibody (Center) (Cat. #AP17348c) western blot analysis in Jurkat cell line lysates (35ug/lane). This demonstrates the ANP32C antibody detected the ANP32C protein (arrow).

Please note: All products are 'FOR RESEARCH USE ONLY. NOT FOR USE IN DIAGNOSTIC OR THERAPEUTIC PROCEDURES'.