

FEZ2 Antibody (N-term)

Affinity Purified Rabbit Polyclonal Antibody (Pab)

Catalog # AP17373a

Product Information

Application	WB, E
Primary Accession	Q9UHY8
Other Accession	NP_005093.2
Reactivity	Human, Rat
Host	Rabbit
Clonality	Polyclonal
Isotype	Rabbit IgG
Clone Names	RB37914
Calculated MW	39666
Antigen Region	1-30

Additional Information

Gene ID	9637
Other Names	Fasciculation and elongation protein zeta-2, Zygin II, Zygin-2, FEZ2
Target/Specificity	This FEZ2 antibody is generated from rabbits immunized with a KLH conjugated synthetic peptide between 1-30 amino acids from the N-terminal region of human FEZ2.
Dilution	WB~~1:1000 E~~Use at an assay dependent concentration.
Format	Purified polyclonal antibody supplied in PBS with 0.09% (W/V) sodium azide. This antibody is purified through a protein A column, followed by peptide affinity purification.
Storage	Maintain refrigerated at 2-8°C for up to 2 weeks. For long term storage store at -20°C in small aliquots to prevent freeze-thaw cycles.
Precautions	FEZ2 Antibody (N-term) is for research use only and not for use in diagnostic or therapeutic procedures.

Protein Information

Name	FEZ2
Function	Involved in axonal outgrowth and fasciculation.
Tissue Location	Expressed in nonneural tissues, such as heart, lung, spleen, muscle, testis, placenta and melanocytes

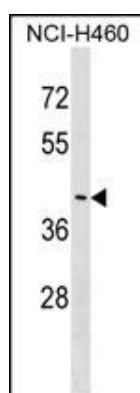
Background

This gene is an ortholog of the *C. elegans* unc-76 gene, which is necessary for normal axonal bundling and elongation within axon bundles. Other orthologs include the rat gene that encodes zygin II, which can bind to synaptotagmin.

References

Rose, J.E., et al. Mol. Med. 16 (7-8), 247-253 (2010) :
Joslyn, G., et al. Alcohol. Clin. Exp. Res. 34(5):800-812(2010)
Assmann, E.M., et al. J. Biol. Chem. 281(15):9869-9881(2006)
Hillier, L.W., et al. Nature 434(7034):724-731(2005)
Fujita, T., et al. Biochem. Biophys. Res. Commun. 313(3):738-744(2004)

Images



FEZ2 Antibody (N-term) (Cat. #AP17373a) western blot analysis in NCI-H460 cell line lysates (35ug/lane). This demonstrates the FEZ2 antibody detected the FEZ2 protein (arrow).

Please note: All products are 'FOR RESEARCH USE ONLY. NOT FOR USE IN DIAGNOSTIC OR THERAPEUTIC PROCEDURES'.