

LY96 Antibody (C-term)

Affinity Purified Rabbit Polyclonal Antibody (Pab)

Catalog # AP17412b

Product Information

Application	WB, E
Primary Accession	Q9Y6Y9
Other Accession	NP_056179.2
Reactivity	Human
Host	Rabbit
Clonality	Polyclonal
Isotype	Rabbit IgG
Clone Names	RB36805
Calculated MW	18546
Antigen Region	103-132

Additional Information

Gene ID	23643
Other Names	Lymphocyte antigen 96, Ly-96, ESOP-1, Protein MD-2, LY96, ESOP1, MD2
Target/Specificity	This LY96 antibody is generated from rabbits immunized with a KLH conjugated synthetic peptide between 103-132 amino acids from the C-terminal region of human LY96.
Dilution	WB~~1:1000 E~~Use at an assay dependent concentration.
Format	Purified polyclonal antibody supplied in PBS with 0.09% (W/V) sodium azide. This antibody is purified through a protein A column, followed by peptide affinity purification.
Storage	Maintain refrigerated at 2-8°C for up to 2 weeks. For long term storage store at -20°C in small aliquots to prevent freeze-thaw cycles.
Precautions	LY96 Antibody (C-term) is for research use only and not for use in diagnostic or therapeutic procedures.

Protein Information

Name	LY96
Synonyms	ESOP1, MD2
Function	Binds bacterial lipopolysaccharide (LPS) (PubMed: 17569869 , PubMed: 17803912). Cooperates with TLR4 in the innate immune response to

bacterial lipopolysaccharide (LPS), and with TLR2 in the response to cell wall components from Gram-positive and Gram-negative bacteria (PubMed:[11160242](#), PubMed:[11593030](#)). Enhances TLR4-dependent activation of NF-kappa-B (PubMed:[10359581](#)). Cells expressing both LY96 and TLR4, but not TLR4 alone, respond to LPS (PubMed:[10359581](#)).

Cellular Location

Secreted, extracellular space. Secreted Note=Retained in the extracellular space at the cell surface by interaction with TLR4 (PubMed:[10359581](#)).

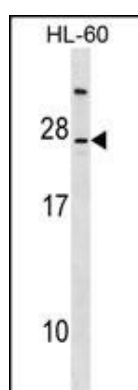
Background

This gene encodes a protein which associates with toll-like receptor 4 on the cell surface and confers responsiveness to lipopolysaccharide (LPS), thus providing a link between the receptor and LPS signaling. Studies of the mouse ortholog suggest that this gene may be involved in endotoxin neutralization. Alternative splicing results in multiple transcript variants encoding different isoforms.

References

Meng, J., et al. J. Biol. Chem. 285(36):27935-27943(2010)
Gray, P., et al. J. Immunol. 184(11):6359-6366(2010)
Salvesen, B., et al. Mol. Immunol. 47(6):1226-1234(2010)
Ohnishi, T., et al. Microbiol. Immunol. 54(2):74-80(2010)
Xue, Y., et al. Genet. Mol. Res. 9(3):1584-1590(2010)

Images



LY96 Antibody (C-term) (Cat. #AP17412b) western blot analysis in HL-60 cell line lysates (35ug/lane). This demonstrates the LY96 antibody detected the LY96 protein (arrow).

Please note: All products are 'FOR RESEARCH USE ONLY. NOT FOR USE IN DIAGNOSTIC OR THERAPEUTIC PROCEDURES'.