

KDM6B Antibody (N-term)

Affinity Purified Rabbit Polyclonal Antibody (Pab)

Catalog # AP17413a

Product Information

Application	WB, E
Primary Accession	O15054
Other Accession	Q5NCY0
Reactivity	Human, Mouse
Host	Rabbit
Clonality	Polyclonal
Isotype	Rabbit IgG
Clone Names	RB36821
Calculated MW	176632
Antigen Region	167-195

Additional Information

Gene ID	23135
Other Names	Lysine-specific demethylase 6B, 11411-, JmjC domain-containing protein 3, Jumonji domain-containing protein 3, Lysine demethylase 6B, KDM6B, JMJD3, KIAA0346
Target/Specificity	This KDM6B antibody is generated from rabbits immunized with a KLH conjugated synthetic peptide between 167-195 amino acids from the N-terminal region of human KDM6B.
Dilution	WB~~1:1000 E~~Use at an assay dependent concentration.
Format	Purified polyclonal antibody supplied in PBS with 0.09% (W/V) sodium azide. This antibody is purified through a protein A column, followed by peptide affinity purification.
Storage	Maintain refrigerated at 2-8°C for up to 2 weeks. For long term storage store at -20°C in small aliquots to prevent freeze-thaw cycles.
Precautions	KDM6B Antibody (N-term) is for research use only and not for use in diagnostic or therapeutic procedures.

Protein Information

Name	KDM6B
Synonyms	JMJD3, KIAA0346

Function

Histone demethylase that specifically demethylates 'Lys-27' of histone H3, thereby playing a central role in histone code (PubMed:[17713478](#), PubMed:[17825402](#), PubMed:[17851529](#), PubMed:[18003914](#)). Demethylates trimethylated and dimethylated H3 'Lys-27' (PubMed:[17713478](#), PubMed:[17825402](#), PubMed:[17851529](#), PubMed:[18003914](#)). Plays a central role in regulation of posterior development, by regulating HOX gene expression (PubMed:[17851529](#)). Involved in inflammatory response by participating in macrophage differentiation in case of inflammation by regulating gene expression and macrophage differentiation (PubMed:[17825402](#)). Plays a demethylase-independent role in chromatin remodeling to regulate T-box family member-dependent gene expression by acting as a link between T-box factors and the SMARCA4- containing SWI/SNF remodeling complex (By similarity).

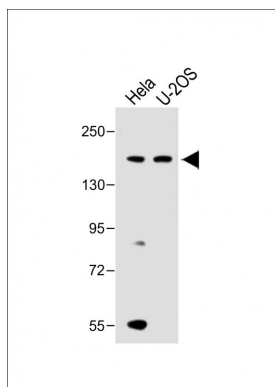
Cellular Location

Nucleus.

Background

Histone demethylase that specifically demethylates 'Lys-27' of histone H3, thereby playing a central role in histone code. Demethylates trimethylated and dimethylated H3 'Lys-27'. Plays a central role in regulation of posterior development, by regulating HOX gene expression. Involved in inflammatory response by participating in macrophage differentiation in case of inflammation by regulating gene expression and macrophage differentiation.

Images



All lanes : Anti-KDM6B Antibody (N-term) at 1:1000 dilution Lane 1: HeLa whole cell lysate Lane 2: U-2OS whole cell lysate Lysates/proteins at 20 µg per lane. Secondary Goat Anti-Rabbit IgG, (H+L), Peroxidase conjugated at 1/10000 dilution. Predicted band size : 177 kDa Blocking/Dilution buffer: 5% NFDM/TBST.

Citations

- [Regulation of the JMID3 \(KDM6B\) histone demethylase in glioblastoma stem cells by STAT3.](#)

Please note: All products are 'FOR RESEARCH USE ONLY. NOT FOR USE IN DIAGNOSTIC OR THERAPEUTIC PROCEDURES'.