

SKAP2 Antibody (Center)

Affinity Purified Rabbit Polyclonal Antibody (Pab)

Catalog # AP17423c

Product Information

Application	WB, E
Primary Accession	Q75563
Other Accession	Q920G0 , Q3UND0 , Q32LP7 , NP_003921.2
Reactivity	Human
Predicted	Bovine, Mouse, Rat
Host	Rabbit
Clonality	Polyclonal
Isotype	Rabbit IgG
Clone Names	RB37004
Calculated MW	41217
Antigen Region	137-165

Additional Information

Gene ID	8935
Other Names	Src kinase-associated phosphoprotein 2, Pyk2/RAFTK-associated protein, Retinoic acid-induced protein 70, SKAP55 homolog, SKAP-55HOM, SKAP-HOM, Src family-associated phosphoprotein 2, Src kinase-associated phosphoprotein 55-related protein, Src-associated adapter protein with PH and SH3 domains, SKAP2, PRAP, RA70, SAPS, SCAP2, SKAP55R
Target/Specificity	This SKAP2 antibody is generated from rabbits immunized with a KLH conjugated synthetic peptide between 137-165 amino acids from the Central region of human SKAP2.
Dilution	WB~~1:1000 E~~Use at an assay dependent concentration.
Format	Purified polyclonal antibody supplied in PBS with 0.09% (W/V) sodium azide. This antibody is purified through a protein A column, followed by peptide affinity purification.
Storage	Maintain refrigerated at 2-8°C for up to 2 weeks. For long term storage store at -20°C in small aliquots to prevent freeze-thaw cycles.
Precautions	SKAP2 Antibody (Center) is for research use only and not for use in diagnostic or therapeutic procedures.

Protein Information

Name	SKAP2
-------------	-------

Synonyms	PRAP, RA70, SAPS, SCAP2, SKAP55R
Function	May be involved in B-cell and macrophage adhesion processes. In B-cells, may act by coupling the B-cell receptor (BCR) to integrin activation. May play a role in src signaling pathway.
Cellular Location	Cytoplasm.
Tissue Location	Ubiquitously expressed. Present in platelets (at protein level).

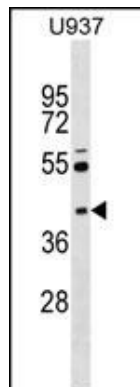
Background

The protein encoded by this gene belongs to the src family kinases. This protein is similar to the src kinase associated phosphoprotein 1. It is an adaptor protein that is thought to play an essential role in the src signaling pathway in various cells. It inhibits PTK2B/RAFTK activity and regulates alpha-synuclein phosphorylation.

References

Bailey, S.D., et al. Diabetes Care 33(10):2250-2253(2010)
 Qu, H.Q., et al. Hum. Mol. Genet. 19(12):2534-2538(2010)
 Talmud, P.J., et al. Am. J. Hum. Genet. 85(5):628-642(2009)
 Barrett, J.C., et al. Nat. Genet. 41(6):703-707(2009)
 Voss, M., et al. BMC Immunol. 10, 53 (2009) :

Images



SKAP2 Antibody (Center) (Cat. #AP17423c) western blot analysis in U937 cell line lysates (35ug/lane). This demonstrates the SKAP2 antibody detected the SKAP2 protein (arrow).

Please note: All products are 'FOR RESEARCH USE ONLY. NOT FOR USE IN DIAGNOSTIC OR THERAPEUTIC PROCEDURES'.