

QPCT Antibody (C-term)

Affinity Purified Rabbit Polyclonal Antibody (Pab)

Catalog # AP17434b

Product Information

Application	WB, E
Primary Accession	Q16769
Other Accession	NP_036545.1
Reactivity	Human
Host	Rabbit
Clonality	Polyclonal
Isotype	Rabbit IgG
Clone Names	RB37104
Calculated MW	40877
Antigen Region	315-343

Additional Information

Gene ID	25797
Other Names	Glutaminyl-peptide cyclotransferase, Glutaminyl cyclase, QC, sQC, Glutaminyl-tRNA cyclotransferase, Glutamyl cyclase, EC, QPCT
Target/Specificity	This QPCT antibody is generated from rabbits immunized with a KLH conjugated synthetic peptide between 315-343 amino acids from the C-terminal region of human QPCT.
Dilution	WB~~1:1000 E~~Use at an assay dependent concentration.
Format	Purified polyclonal antibody supplied in PBS with 0.09% (W/V) sodium azide. This antibody is purified through a protein A column, followed by peptide affinity purification.
Storage	Maintain refrigerated at 2-8°C for up to 2 weeks. For long term storage store at -20°C in small aliquots to prevent freeze-thaw cycles.
Precautions	QPCT Antibody (C-term) is for research use only and not for use in diagnostic or therapeutic procedures.

Protein Information

Name	QPCT
Function	Responsible for the biosynthesis of pyroglutamyl peptides. Has a bias against acidic and tryptophan residues adjacent to the N- terminal glutaminy residue and a lack of importance of chain length after the second residue.

Also catalyzes N-terminal pyroglutamate formation. In vitro, catalyzes pyroglutamate formation of N-terminally truncated form of APP amyloid-beta peptides [Glu-3]-amyloid-beta. May be involved in the N-terminal pyroglutamate formation of several amyloid-related plaque-forming peptides.

Cellular Location Secreted.

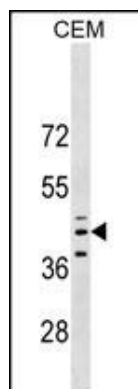
Background

This gene encodes human pituitary glutaminyl cyclase, which is responsible for the presence of pyroglutamyl residues in many neuroendocrine peptides. The amino acid sequence of this enzyme is 86% identical to that of bovine glutaminyl cyclase.

References

Morawski, M., et al. Acta Neuropathol. 120(2):195-207(2010)
Stephan, A., et al. FEBS J. 276(22):6522-6536(2009)
Marroni, F., et al. Circ Cardiovasc Genet 2(4):322-328(2009)
Calvaresi, M., et al. Proteins 73(3):527-538(2008)
Cynis, H., et al. J. Mol. Biol. 379(5):966-980(2008)

Images



QPCT Antibody (C-term) (Cat. #AP17434b) western blot analysis in CEM cell line lysates (35ug/lane). This demonstrates the QPCT antibody detected the QPCT protein (arrow).

Please note: All products are 'FOR RESEARCH USE ONLY. NOT FOR USE IN DIAGNOSTIC OR THERAPEUTIC PROCEDURES'.