

# ABLIM3 Antibody (C-term)

Affinity Purified Rabbit Polyclonal Antibody (Pab)

Catalog # AP17435b

## Product Information

---

Application	WB, E
Primary Accession	<a href="#">O94929</a>
Other Accession	<a href="#">Q69ZX8</a> , <a href="#">NP_055760.1</a>
Reactivity	Human
Predicted	Mouse
Host	Rabbit
Clonality	Polyclonal
Isotype	Rabbit IgG
Clone Names	RB37108
Calculated MW	77802
Antigen Region	613-641

## Additional Information

---

Gene ID	22885
Other Names	Actin-binding LIM protein 3, abLIM-3, Actin-binding LIM protein family member 3, ABLIM3, KIAA0843
Target/Specificity	This ABLIM3 antibody is generated from rabbits immunized with a KLH conjugated synthetic peptide between 613-641 amino acids from the C-terminal region of human ABLIM3.
Dilution	WB~~1:1000 E~~Use at an assay dependent concentration.
Format	Purified polyclonal antibody supplied in PBS with 0.09% (W/V) sodium azide. This antibody is purified through a protein A column, followed by peptide affinity purification.
Storage	Maintain refrigerated at 2-8°C for up to 2 weeks. For long term storage store at -20°C in small aliquots to prevent freeze-thaw cycles.
Precautions	ABLIM3 Antibody (C-term) is for research use only and not for use in diagnostic or therapeutic procedures.

## Protein Information

---

Name	ABLIM3
Synonyms	KIAA0843

<b>Function</b>	May act as scaffold protein. May stimulate ABRA activity and ABRA-dependent SRF transcriptional activity.
<b>Cellular Location</b>	Cytoplasm.
<b>Tissue Location</b>	Expressed predominantly in heart and brain.

## Background

---

The LIM domain is a double zinc finger structure that promotes protein-protein interactions. LIM domain proteins, such as ABLIM3, play roles in embryonic development, cell lineage determination, and cancer (Krupp et al., 2006 [PubMed 16328021]).

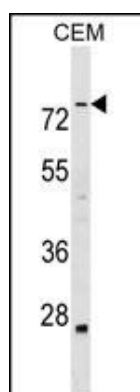
## References

---

Barrientos, T., et al. J. Biol. Chem. 282(11):8393-8403(2007)  
Olsen, J.V., et al. Cell 127(3):635-648(2006)  
Krupp, M., et al. Int. J. Mol. Med. 17(1):129-133(2006)  
Zheng, B., et al. Biochim. Biophys. Acta 1690(1):1-10(2004)  
Yamada, S., et al. Oncogene 23(35):5901-5911(2004)

## Images

---



ABLIM3 Antibody (C-term) (Cat. #AP17435b) western blot analysis in CEM cell line lysates (35ug/lane). This demonstrates the ABLIM3 antibody detected the ABLIM3 protein (arrow).

Please note: All products are 'FOR RESEARCH USE ONLY. NOT FOR USE IN DIAGNOSTIC OR THERAPEUTIC PROCEDURES'.