

# IL20RA Antibody (Center)

Affinity Purified Rabbit Polyclonal Antibody (Pab)

Catalog # AP17436c

## Product Information

---

<b>Application</b>	WB, E
<b>Primary Accession</b>	<a href="#">Q9UHF4</a>
<b>Other Accession</b>	<a href="#">NP_055247.2</a>
<b>Reactivity</b>	Human, Rat, Mouse
<b>Host</b>	Rabbit
<b>Clonality</b>	Polyclonal
<b>Isotype</b>	Rabbit IgG
<b>Clone Names</b>	RB37111
<b>Calculated MW</b>	62485
<b>Antigen Region</b>	141-169

## Additional Information

---

<b>Gene ID</b>	53832
<b>Other Names</b>	Interleukin-20 receptor subunit alpha, IL-20 receptor subunit alpha, IL-20R-alpha, IL-20RA, Cytokine receptor class-II member 8, Cytokine receptor family 2 member 8, CRF2-8, IL-20R1, ZcytoR7, IL20RA
<b>Target/Specificity</b>	This IL20RA antibody is generated from rabbits immunized with a KLH conjugated synthetic peptide between 141-169 amino acids from the Central region of human IL20RA.
<b>Dilution</b>	WB~~1:1000 E~~Use at an assay dependent concentration.
<b>Format</b>	Purified polyclonal antibody supplied in PBS with 0.05% (V/V) Proclin 300. This antibody is prepared by Saturated Ammonium Sulfate (SAS) precipitation followed by dialysis against PBS.
<b>Storage</b>	Maintain refrigerated at 2-8°C for up to 2 weeks. For long term storage store at -20°C in small aliquots to prevent freeze-thaw cycles.
<b>Precautions</b>	IL20RA Antibody (Center) is for research use only and not for use in diagnostic or therapeutic procedures.

## Protein Information

---

<b>Name</b>	IL20RA
<b>Function</b>	The IL20RA/IL20RB dimer is a receptor for IL19, IL20 and IL24. The IL20RA/IL10RB dimer is a receptor for IL26.

<b>Cellular Location</b>	Membrane; Single-pass type I membrane protein
<b>Tissue Location</b>	Widely expressed with highest levels in skin and testis and high levels in brain. Highly expressed in psoriatic skin

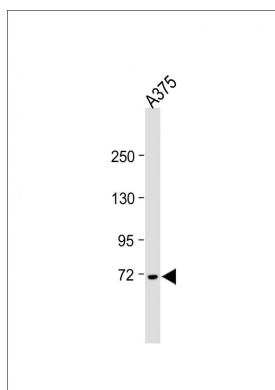
## Background

The protein encoded by this gene is a receptor for interleukin 20 (IL20), a cytokine that may be involved in epidermal function. The receptor of IL20 is a heterodimeric receptor complex consisting of this protein and interleukin 20 receptor beta (IL20B). This gene and IL20B are highly expressed in skin. The expression of both genes is found to be upregulated in Psoriasis.

## References

Bailey, S.D., et al. Diabetes Care 33(10):2250-2253(2010)  
 Davila, S., et al. Genes Immun. 11(3):232-238(2010)  
 Kingo, K., et al. J. Dermatol. Sci. 57(1):71-73(2010)  
 Talmud, P.J., et al. Am. J. Hum. Genet. 85(5):628-642(2009)  
 Zhu, H., et al. HBPD INT 8(4):402-406(2009)

## Images



All lanes : Anti-IL20RA Antibody (Center) at 1:1000 dilution  
 Lane 1: A375 whole cell lysate Lysates/proteins at 20 µg per lane. Secondary Goat Anti-Rabbit IgG, (H+L), Peroxidase conjugated (ASP1615) at 1/15000 dilution.  
 Observed band size : 70kDa Blocking/Dilution buffer: 5% NFDM/TBST.

Please note: All products are 'FOR RESEARCH USE ONLY. NOT FOR USE IN DIAGNOSTIC OR THERAPEUTIC PROCEDURES'.