

ZBTB22 Antibody (C-term)

Affinity Purified Rabbit Polyclonal Antibody (Pab)

Catalog # AP17466b

Product Information

Application	WB, E
Primary Accession	O15209
Other Accession	Q9Z0G7 , NP_001138810.1 , NP_005444.4
Reactivity	Human, Mouse
Predicted	Mouse
Host	Rabbit
Clonality	Polyclonal
Isotype	Rabbit IgG
Clone Names	RB37480
Calculated MW	65602
Antigen Region	476-502

Additional Information

Gene ID	9278
Other Names	Zinc finger and BTB domain-containing protein 22, Protein BING1, Zinc finger and BTB domain-containing protein 22A, Zinc finger protein 297, ZBTB22, BING1, ZBTB22A, ZNF297
Target/Specificity	This ZBTB22 antibody is generated from rabbits immunized with a KLH conjugated synthetic peptide between 476-502 amino acids from the C-terminal region of human ZBTB22.
Dilution	WB~~1:1000 E~~Use at an assay dependent concentration.
Format	Purified polyclonal antibody supplied in PBS with 0.09% (W/V) sodium azide. This antibody is purified through a protein A column, followed by peptide affinity purification.
Storage	Maintain refrigerated at 2-8°C for up to 2 weeks. For long term storage store at -20°C in small aliquots to prevent freeze-thaw cycles.
Precautions	ZBTB22 Antibody (C-term) is for research use only and not for use in diagnostic or therapeutic procedures.

Protein Information

Name	ZBTB22
Synonyms	BING1, ZBTB22A, ZNF297

Function	May be involved in transcriptional regulation.
Cellular Location	Nucleus.

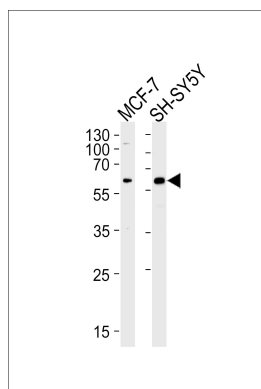
Background

ZBTB22 may be involved in transcriptional regulation.

References

Barcellos, L.F., et al. PLoS Genet. 5 (10), E1000696 (2009) :
Mungall, A.J., et al. Nature 425(6960):805-811(2003)
Herberg, J.A., et al. J. Mol. Biol. 277(4):839-857(1998)
Herberg, J.A., et al. Eur. J. Immunol. 28(2):459-467(1998)

Images



Western blot analysis of lysates from MCF-7, SH-SY5Y cell line (from left to right), using ZBTB22 Antibody (C-term)(Cat. #AP17466b). AP17466b was diluted at 1:1000 at each lane. A goat anti-rabbit IgG H&L(HRP) at 1:5000 dilution was used as the secondary antibody. Lysates at 35ug per lane.

Please note: All products are 'FOR RESEARCH USE ONLY. NOT FOR USE IN DIAGNOSTIC OR THERAPEUTIC PROCEDURES'.