

NAP1L3 Antibody (C-term)

Affinity Purified Rabbit Polyclonal Antibody (Pab)

Catalog # AP17474b

Product Information

Application	WB, E
Primary Accession	Q99457
Other Accession	NP_004529.2
Reactivity	Human
Host	Rabbit
Clonality	Polyclonal
Isotype	Rabbit IgG
Clone Names	RB37499
Calculated MW	57593
Antigen Region	432-459

Additional Information

Gene ID	4675
Other Names	Nucleosome assembly protein 1-like 3, NAP1L3, BNAP
Target/Specificity	This NAP1L3 antibody is generated from rabbits immunized with a KLH conjugated synthetic peptide between 432-459 amino acids from the C-terminal region of human NAP1L3.
Dilution	WB~~1:1000 E~~Use at an assay dependent concentration.
Format	Purified polyclonal antibody supplied in PBS with 0.09% (W/V) sodium azide. This antibody is purified through a protein A column, followed by peptide affinity purification.
Storage	Maintain refrigerated at 2-8°C for up to 2 weeks. For long term storage store at -20°C in small aliquots to prevent freeze-thaw cycles.
Precautions	NAP1L3 Antibody (C-term) is for research use only and not for use in diagnostic or therapeutic procedures.

Protein Information

Name	NAP1L3
Synonyms	BNAP
Cellular Location	Nucleus.

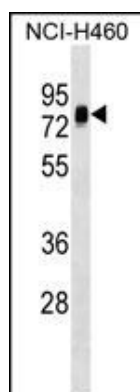
Background

This gene encodes a member of the nucleosome assembly protein (NAP) family. It is linked closely to a region of genes responsible for several X-linked mental retardation syndromes. Alternatively spliced transcript variants have been found for this gene, but the biological validity of the variants has not been determined.

References

Ross, M.T., et al. Nature 434(7031):325-337(2005)
Reddy, P.H., et al. Genomics 46(2):174-182(1997)
Watanabe, T.K., et al. Cytogenet. Cell Genet. 74(4):281-285(1996)

Images



NAP1L3 Antibody (C-term) (Cat. #AP17474b) western blot analysis in NCI-H460 cell line lysates (35ug/lane). This demonstrates the NAP1L3 antibody detected the NAP1L3 protein (arrow).

Please note: All products are 'FOR RESEARCH USE ONLY. NOT FOR USE IN DIAGNOSTIC OR THERAPEUTIC PROCEDURES'.