

PBLD Antibody (C-term)

Affinity Purified Rabbit Polyclonal Antibody (Pab)

Catalog # AP17476b

Product Information

Application	WB, E
Primary Accession	P30039
Other Accession	NP_071412.2
Reactivity	Human
Host	Rabbit
Clonality	Polyclonal
Isotype	Rabbit IgG
Clone Names	RB37506
Calculated MW	31785
Antigen Region	242-269

Additional Information

Gene ID	64081
Other Names	Phenazine biosynthesis-like domain-containing protein, 51--, MAWD-binding protein, MAWDBP, Unknown protein 32 from 2D-page of liver tissue, PBLD, MAWBP
Target/Specificity	This PBLD antibody is generated from rabbits immunized with a KLH conjugated synthetic peptide between 242-269 amino acids from the C-terminal region of human PBLD.
Dilution	WB~~1:1000 E~~Use at an assay dependent concentration.
Format	Purified polyclonal antibody supplied in PBS with 0.09% (W/V) sodium azide. This antibody is purified through a protein A column, followed by peptide affinity purification.
Storage	Maintain refrigerated at 2-8°C for up to 2 weeks. For long term storage store at -20°C in small aliquots to prevent freeze-thaw cycles.
Precautions	PBLD Antibody (C-term) is for research use only and not for use in diagnostic or therapeutic procedures.

Protein Information

Name	PBLD
Synonyms	MAWBP

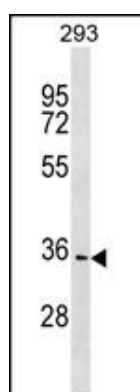
Background

Belongs to the phzF family.

References

Macgregor, S., et al. Hum. Mol. Genet. 19(13):2716-2724(2010)
Ramdas, W.D., et al. PLoS Genet. 6 (6), E1000978 (2010) :
Wang, A.G., et al. Biochem. Biophys. Res. Commun. 345(3):1022-1032(2006)
Grupe, A., et al. Am. J. Hum. Genet. 78(1):78-88(2006)
van Dijk, M., et al. Nat. Genet. 37(5):514-519(2005)

Images



PBLD Antibody (C-term) (Cat. #AP17476b) western blot analysis in 293 cell line lysates (35ug/lane). This demonstrates the PBLD antibody detected the PBLD protein (arrow).

Please note: All products are 'FOR RESEARCH USE ONLY. NOT FOR USE IN DIAGNOSTIC OR THERAPEUTIC PROCEDURES'.