

# FBXW9 Antibody (N-term)

Affinity Purified Rabbit Polyclonal Antibody (Pab)

Catalog # AP17484a

## Product Information

---

Application	WB, E
Primary Accession	<a href="#">Q5XUX1</a>
Other Accession	<a href="#">NP_115677.2</a>
Reactivity	Human
Host	Rabbit
Clonality	Polyclonal
Isotype	Rabbit IgG
Clone Names	RB37521
Calculated MW	50760
Antigen Region	5-31

## Additional Information

---

Gene ID	84261
Other Names	F-box/WD repeat-containing protein 9, F-box and WD-40 domain-containing protein 9, FBXW9, FBW9
Target/Specificity	This FBXW9 antibody is generated from rabbits immunized with a KLH conjugated synthetic peptide between 5-31 amino acids from the N-terminal region of human FBXW9.
Dilution	WB~~1:1000 E~~Use at an assay dependent concentration.
Format	Purified polyclonal antibody supplied in PBS with 0.09% (W/V) sodium azide. This antibody is purified through a protein A column, followed by peptide affinity purification.
Storage	Maintain refrigerated at 2-8°C for up to 2 weeks. For long term storage store at -20°C in small aliquots to prevent freeze-thaw cycles.
Precautions	FBXW9 Antibody (N-term) is for research use only and not for use in diagnostic or therapeutic procedures.

## Protein Information

---

Name	FBXW9
Synonyms	FBW9
Function	Substrate-recognition component of the SCF (SKP1-CUL1-F-box protein)-type

## Background

---

Members of the F-box protein family, such as FBXW9, are characterized by an approximately 40-amino acid F-box motif. SCF complexes, formed by SKP1 (MIM 601434), cullin (see CUL1; MIM 603034), and F-box proteins, act as protein-ubiquitin ligases. F-box proteins interact with SKP1 through the F box, and they interact with ubiquitination targets through other protein interaction domains (Jin et al., 2004 [PubMed 15520277]).[supplied by OMIM].

## References

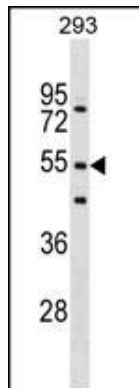
---

Lievens, S., et al. J. Proteome Res. 8(2):877-886(2009)

Jin, J., et al. Genes Dev. 18(21):2573-2580(2004)

## Images

---



FBXW9 Antibody (N-term) (Cat. #AP17484a) western blot analysis in 293 cell line lysates (35ug/lane). This demonstrates the FBXW9 antibody detected the FBXW9 protein (arrow).

Please note: All products are 'FOR RESEARCH USE ONLY. NOT FOR USE IN DIAGNOSTIC OR THERAPEUTIC PROCEDURES'.