

RPL18 Antibody (N-term)

Affinity Purified Rabbit Polyclonal Antibody (Pab)

Catalog # AP17491a

Product Information

Application	WB, E
Primary Accession	Q07020
Other Accession	P12001 , Q95342 , P35980 , Q4R5H8 , Q5E973 , P02412 , P09897 , NP_000970.1
Reactivity	Human
Predicted	Xenopus, Bovine, Monkey, Mouse, Pig, Rat
Host	Rabbit
Clonality	Polyclonal
Isotype	Rabbit IgG
Clone Names	RB37549
Calculated MW	21634
Antigen Region	1-30

Additional Information

Gene ID	6141
Other Names	60S ribosomal protein L18, RPL18
Target/Specificity	This RPL18 antibody is generated from rabbits immunized with a KLH conjugated synthetic peptide between 1-30 amino acids from the N-terminal region of human RPL18.
Dilution	WB~~1:1000 E~~Use at an assay dependent concentration.
Format	Purified polyclonal antibody supplied in PBS with 0.09% (W/V) sodium azide. This antibody is purified through a protein A column, followed by peptide affinity purification.
Storage	Maintain refrigerated at 2-8°C for up to 2 weeks. For long term storage store at -20°C in small aliquots to prevent freeze-thaw cycles.
Precautions	RPL18 Antibody (N-term) is for research use only and not for use in diagnostic or therapeutic procedures.

Protein Information

Name	RPL18
Function	Component of the large ribosomal subunit (PubMed: 12962325 , PubMed: 23636399 , PubMed: 25901680 , PubMed: 25957688 , PubMed: 32669547). The ribosome is a large ribonucleoprotein complex

responsible for the synthesis of proteins in the cell (PubMed:[12962325](#), PubMed:[23636399](#), PubMed:[25901680](#), PubMed:[25957688](#), PubMed:[32669547](#)).

Cellular Location

Cytoplasm, cytosol. Cytoplasm Rough endoplasmic reticulum {ECO:0000250|UniProtKB:Q95342} Note=Detected on cytosolic polysomes (PubMed:25957688). Detected in ribosomes that are associated with the rough endoplasmic reticulum (By similarity). {ECO:0000250|UniProtKB:Q95342, ECO:0000269|PubMed:25957688}

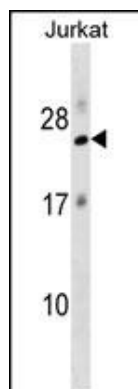
Background

Ribosomes, the organelles that catalyze protein synthesis, consist of a small 40S subunit and a large 60S subunit. Together these subunits are composed of 4 RNA species and approximately 80 structurally distinct proteins. This gene encodes a ribosomal protein that is a component of the 60S subunit. The protein belongs to the L18E family of ribosomal proteins. It is located in the cytoplasm. As is typical for genes encoding ribosomal proteins, there are multiple processed pseudogenes of this gene dispersed through the genome.

References

Bailey, S.D., et al. Diabetes Care 33(10):2250-2253(2010)
Talmud, P.J., et al. Am. J. Hum. Genet. 85(5):628-642(2009)
Sugiyama, N., et al. Mol. Cell Proteomics 6(6):1103-1109(2007)
Beausoleil, S.A., et al. Nat. Biotechnol. 24(10):1285-1292(2006)
Kullberg, M., et al. Mol. Biol. Evol. 23(8):1493-1503(2006)

Images



RPL18 Antibody (N-term) (Cat. #AP17491a) western blot analysis in Jurkat cell line lysates (35ug/lane). This demonstrates the RPL18 antibody detected the RPL18 protein (arrow).

Please note: All products are 'FOR RESEARCH USE ONLY. NOT FOR USE IN DIAGNOSTIC OR THERAPEUTIC PROCEDURES'.