

SCG3 Antibody (C-term)

Affinity Purified Rabbit Polyclonal Antibody (Pab)

Catalog # AP17492b

Product Information

Application	WB, E
Primary Accession	Q8WXD2
Other Accession	NP_037375.2 , NP_001158729.1
Reactivity	Human
Host	Rabbit
Clonality	Polyclonal
Isotype	Rabbit IgG
Clone Names	RB37551
Calculated MW	53005
Antigen Region	378-406

Additional Information

Gene ID	29106
Other Names	Secretogranin-3, Secretogranin III, SgIII, SCG3
Target/Specificity	This SCG3 antibody is generated from rabbits immunized with a KLH conjugated synthetic peptide between 378-406 amino acids from the C-terminal region of human SCG3.
Dilution	WB~~1:1000 E~~Use at an assay dependent concentration.
Format	Purified polyclonal antibody supplied in PBS with 0.09% (W/V) sodium azide. This antibody is purified through a protein A column, followed by peptide affinity purification.
Storage	Maintain refrigerated at 2-8°C for up to 2 weeks. For long term storage store at -20°C in small aliquots to prevent freeze-thaw cycles.
Precautions	SCG3 Antibody (C-term) is for research use only and not for use in diagnostic or therapeutic procedures.

Protein Information

Name	SCG3
Function	Member of the granin protein family that regulates the biogenesis of secretory granules (PubMed: 19357184). Acts as a sorting receptor for intragranular proteins including chromogranin A/CHGA (By similarity). May also play a role in angiogenesis. Promotes endothelial proliferation, migration

and tube formation through MEK/ERK signaling pathway (PubMed:[29154827](#)).

Cellular Location

Cytoplasmic vesicle, secretory vesicle {ECO:0000250|UniProtKB:P47868}.
Cytoplasmic vesicle, secretory vesicle membrane
{ECO:0000250|UniProtKB:P47868}; Peripheral membrane protein. Secreted.
Note=Associated with the secretory granule membrane through direct
binding to cholesterol-enriched lipid rafts. {ECO:0000250|UniProtKB:P47868}

Tissue Location

Detected in urine (at protein level) (PubMed:25326458). Expressed in brain,
heart, kidney, liver and skeletal muscle.

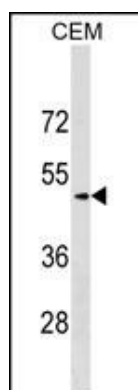
Background

The protein encoded by this gene is a member of the chromogranin/secretogranin family of neuroendocrine secretory proteins. Granins may serve as precursors for biologically active peptides. Some granins have been shown to function as helper proteins in sorting and proteolytic processing of prohormones; however, the function of this protein is unknown. Two transcript variants encoding different isoforms have been found for this gene.

References

Li, X., et al. J. Allergy Clin. Immunol. 125(2):328-335(2010)
He, C., et al. Clin. Chim. Acta 402 (1-2), 102-106 (2009) :
Stridsberg, M., et al. Regul. Pept. 148 (1-3), 95-98 (2008) :
Tanabe, A., et al. J. Clin. Endocrinol. Metab. 92(3):1145-1154(2007)
Sakai, Y., et al. Arch. Histol. Cytol. 67(1):57-64(2004)

Images



SCG3 Antibody (C-term) (Cat. #AP17492b) western blot analysis in CEM cell line lysates (35ug/lane). This demonstrates the SCG3 antibody detected the SCG3 protein (arrow).

Please note: All products are 'FOR RESEARCH USE ONLY. NOT FOR USE IN DIAGNOSTIC OR THERAPEUTIC PROCEDURES'.