

RTN2 Antibody (N-term)

Affinity Purified Rabbit Polyclonal Antibody (Pab)

Catalog # AP17495a

Product Information

Application	WB, E
Primary Accession	O75298
Other Accession	NP_005610.1 , NP_996784.1
Reactivity	Human
Host	Rabbit
Clonality	Polyclonal
Isotype	Rabbit IgG
Clone Names	RB37555
Calculated MW	59264
Antigen Region	109-138

Additional Information

Gene ID	6253
Other Names	Reticulon-2, Neuroendocrine-specific protein-like 1, NSP-like protein 1, Neuroendocrine-specific protein-like I, NSP-like protein I, NSPLI, RTN2, NSPL1
Target/Specificity	This RTN2 antibody is generated from rabbits immunized with a KLH conjugated synthetic peptide between 109-138 amino acids from the N-terminal region of human RTN2.
Dilution	WB~~1:1000 E~~Use at an assay dependent concentration.
Format	Purified polyclonal antibody supplied in PBS with 0.09% (W/V) sodium azide. This antibody is purified through a protein A column, followed by peptide affinity purification.
Storage	Maintain refrigerated at 2-8°C for up to 2 weeks. For long term storage store at -20°C in small aliquots to prevent freeze-thaw cycles.
Precautions	RTN2 Antibody (N-term) is for research use only and not for use in diagnostic or therapeutic procedures.

Protein Information

Name	RTN2
Synonyms	NSPL1
Function	Inhibits amyloid precursor protein processing, probably by blocking BACE1

activity (PubMed:[15286784](#)). Enhances trafficking of the glutamate transporter SLC1A1/EAAC1 from the endoplasmic reticulum to the cell surface (By similarity). Plays a role in the translocation of SLC2A4/GLUT4 from intracellular membranes to the cell membrane which facilitates the uptake of glucose into the cell (By similarity).

Cellular Location

Endoplasmic reticulum membrane; Multi-pass membrane protein. Sarcoplasmic reticulum membrane {ECO:0000250|UniProtKB:O70622}; Multi-pass membrane protein. Cell membrane {ECO:0000250|UniProtKB:Q6WN19}; Multi-pass membrane protein. Cell membrane, sarcolemma {ECO:0000250|UniProtKB:O70622}; Multi-pass membrane protein. Cell membrane, sarcolemma, T-tubule {ECO:0000250|UniProtKB:O70622}; Multi-pass membrane protein. Cytoplasm, myofibril, sarcomere, Z line {ECO:0000250|UniProtKB:O70622}. Cytoplasm, cytoskeleton {ECO:0000250|UniProtKB:O70622}. Note=Localizes to intermediate filaments in mononucleated myoblasts and to Z lines in mature myotubes {ECO:0000250|UniProtKB:O70622}

Tissue Location

[Isoform RTN2-C]: Highly expressed in skeletal muscle.

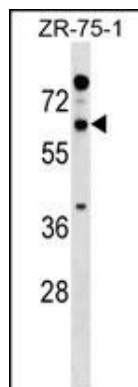
Background

This gene belongs to the family of reticulon encoding genes. Reticulons are associated with the endoplasmic reticulum, and are involved in neuroendocrine secretion or in membrane trafficking in neuroendocrine cells. Alternatively spliced transcript variants encoding different isoforms have been identified.

References

Ikemoto, T., et al. Diabetes 58(12):2802-2812(2009)
Liu, Y., et al. J. Biol. Chem. 283(10):6561-6571(2008)
Ballif, B.A., et al. Mol. Cell Proteomics 3(11):1093-1101(2004)
Ballif, B.A., et al. Mol. Cell Proteomics 3(11):1093-1101(2004)
He, W., et al. Nat. Med. 10(9):959-965(2004)

Images



RTN2 Antibody (N-term) (Cat. #AP17495a) western blot analysis in ZR-75-1 cell line lysates (35ug/lane). This demonstrates the RTN2 antibody detected the RTN2 protein (arrow).

Please note: All products are 'FOR RESEARCH USE ONLY. NOT FOR USE IN DIAGNOSTIC OR THERAPEUTIC PROCEDURES'.