

# SDF4 Antibody (C-term)

Affinity Purified Rabbit Polyclonal Antibody (Pab)

Catalog # AP17498b

## Product Information

---

Application	WB, E
Primary Accession	<a href="#">Q9BRK5</a>
Other Accession	<a href="#">Q91ZS3</a> , <a href="#">Q61112</a> , <a href="#">Q4R585</a> , <a href="#">NP_057631.1</a> , <a href="#">NP_057260.2</a>
Reactivity	Human
Predicted	Monkey, Mouse, Rat
Host	Rabbit
Clonality	Polyclonal
Isotype	Rabbit IgG
Clone Names	RB37570
Calculated MW	41807
Antigen Region	258-287

## Additional Information

---

Gene ID	51150
Other Names	45 kDa calcium-binding protein, Cab45, Stromal cell-derived factor 4, SDF-4, SDF4, CAB45
Target/Specificity	This SDF4 antibody is generated from rabbits immunized with a KLH conjugated synthetic peptide between 258-287 amino acids from the C-terminal region of human SDF4.
Dilution	WB~~1:1000 E~~Use at an assay dependent concentration.
Format	Purified polyclonal antibody supplied in PBS with 0.09% (W/V) sodium azide. This antibody is purified through a protein A column, followed by peptide affinity purification.
Storage	Maintain refrigerated at 2-8°C for up to 2 weeks. For long term storage store at -20°C in small aliquots to prevent freeze-thaw cycles.
Precautions	SDF4 Antibody (C-term) is for research use only and not for use in diagnostic or therapeutic procedures.

## Protein Information

---

Name	SDF4
Synonyms	CAB45

<b>Function</b>	May regulate calcium-dependent activities in the endoplasmic reticulum lumen or post-ER compartment.
<b>Cellular Location</b>	[Isoform 1]: Golgi apparatus lumen {ECO:0000250   UniProtKB:Q61112}
<b>Tissue Location</b>	Ubiquitous. Isoform 5 is expressed in pancreas.

## Background

---

SDF4 may regulate calcium-dependent activities in the endoplasmic reticulum lumen or post-ER compartment (By similarity). Isoform 5 may be involved in the exocytosis of zymogens by pancreatic acini.

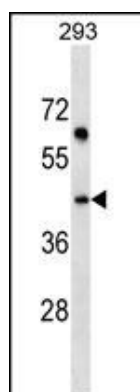
## References

---

Bailey, S.D., et al. Diabetes Care 33(10):2250-2253(2010)  
Hosgood, H.D. III, et al. Occup Environ Med 66(12):848-853(2009)  
Talmud, P.J., et al. Am. J. Hum. Genet. 85(5):628-642(2009)  
Kang, H., et al. Int. J. Oncol. 35(1):205-211(2009)  
Zhu, Y., et al. J Genet Genomics 35(3):153-161(2008)

## Images

---



SDF4 Antibody (C-term) (Cat. #AP17498b) western blot analysis in 293 cell line lysates (35ug/lane). This demonstrates the SDF4 antibody detected the SDF4 protein (arrow).

Please note: All products are 'FOR RESEARCH USE ONLY. NOT FOR USE IN DIAGNOSTIC OR THERAPEUTIC PROCEDURES'.