

COMMD9 Antibody (C-term)

Affinity Purified Rabbit Polyclonal Antibody (Pab)

Catalog # AP17500b

Product Information

Application	WB, E
Primary Accession	Q9P000
Other Accession	NP_054905.2
Reactivity	Human
Host	Rabbit
Clonality	Polyclonal
Isotype	Rabbit IgG
Clone Names	RB37572
Calculated MW	21819
Antigen Region	147-176

Additional Information

Gene ID	29099
Other Names	COMM domain-containing protein 9, COMMD9
Target/Specificity	This COMMD9 antibody is generated from rabbits immunized with a KLH conjugated synthetic peptide between 147-176 amino acids from the C-terminal region of human COMMD9.
Dilution	WB~~1:1000 E~~Use at an assay dependent concentration.
Format	Purified polyclonal antibody supplied in PBS with 0.09% (W/V) sodium azide. This antibody is purified through a protein A column, followed by peptide affinity purification.
Storage	Maintain refrigerated at 2-8°C for up to 2 weeks. For long term storage store at -20°C in small aliquots to prevent freeze-thaw cycles.
Precautions	COMMD9 Antibody (C-term) is for research use only and not for use in diagnostic or therapeutic procedures.

Protein Information

Name	COMMD9
Function	Scaffold protein in the commander complex that is essential for endosomal recycling of transmembrane cargos; the commander complex is composed of the CCC subcomplex and the retriever subcomplex (PubMed: 37172566 , PubMed: 38459129). May modulate activity of cullin- RING E3 ubiquitin ligase

(CRL) complexes (PubMed:[21778237](#)). May down- regulate activation of NF-kappa-B (PubMed:[15799966](#)). Modulates Na(+) transport in epithelial cells by regulation of apical cell surface expression of amiloride-sensitive sodium channel (ENaC) subunits (PubMed:[23637203](#)).

Cellular Location Nucleus. Cytoplasmic vesicle

Tissue Location Ubiquitous..

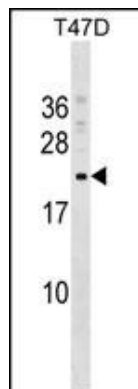
Background

The function of this protein remains unknown.

References

Burstein, E., et al. J. Biol. Chem. 280(23):22222-22232(2005)

Images



COMMD9 Antibody (C-term) (Cat. #AP17500b) western blot analysis in T47D cell line lysates (35ug/lane). This demonstrates the COMMD9 antibody detected the COMMD9 protein (arrow).

Please note: All products are 'FOR RESEARCH USE ONLY. NOT FOR USE IN DIAGNOSTIC OR THERAPEUTIC PROCEDURES'.