

MARCH10 Antibody (Center)

Affinity Purified Rabbit Polyclonal Antibody (Pab)

Catalog # AP17504c

Product Information

| | |
|-------------------|--|
| Application | WB, E |
| Primary Accession | Q8NA82 |
| Other Accession | NP_001094345.1 , NP_689811.2 |
| Reactivity | Human |
| Host | Rabbit |
| Clonality | Polyclonal |
| Isotype | Rabbit IgG |
| Clone Names | RB37812 |
| Calculated MW | 90511 |
| Antigen Region | 248-274 |

Additional Information

| | |
|--------------------|--|
| Gene ID | 162333 |
| Other Names | Probable E3 ubiquitin-protein ligase MARCH10, 632-, Membrane-associated RING finger protein 10, Membrane-associated RING-CH protein X, MARCH-X, RING finger protein 190, MARCH10, RNF190 |
| Target/Specificity | This MARCH10 antibody is generated from rabbits immunized with a KLH conjugated synthetic peptide between 248-274 amino acids from the Central region of human MARCH10. |
| Dilution | WB~~1:1000 E~~Use at an assay dependent concentration. |
| Format | Purified polyclonal antibody supplied in PBS with 0.09% (W/V) sodium azide. This antibody is purified through a protein A column, followed by peptide affinity purification. |
| Storage | Maintain refrigerated at 2-8°C for up to 2 weeks. For long term storage store at -20°C in small aliquots to prevent freeze-thaw cycles. |
| Precautions | MARCH10 Antibody (Center) is for research use only and not for use in diagnostic or therapeutic procedures. |

Protein Information

| | |
|----------|---|
| Name | MARCHF10 (HGNC:26655) |
| Synonyms | MARCH10, RNF190 |

Function

E3 ubiquitin-protein ligase (Probable). E3 ubiquitin ligases accept ubiquitin from an E2 ubiquitin-conjugating enzyme in the form of a thioester and then directly transfer the ubiquitin to targeted substrates.

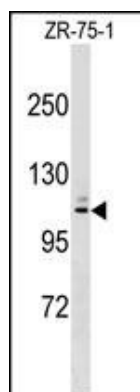
Background

MARCH10 is a member of the MARCH family of membrane-bound E3 ubiquitin ligases (EC 6.3.2.19). MARCH enzymes add ubiquitin (see MIM 191339) to target lysines in substrate proteins, thereby signaling their vesicular transport between membrane compartments (Morokuma et al., 2007 [PubMed 17604280]).

References

Yoshida, T., et al. Int. J. Mol. Med. 25(4):649-656(2010)
Oguri, M., et al. Am. J. Hypertens. 23(1):70-77(2010)
Yoshida, T., et al. Int. J. Mol. Med. 24(4):539-547(2009)
Morokuma, Y., et al. J. Biol. Chem. 282(34):24806-24815(2007)

Images



MARCH10 Antibody (Center) (Cat. #AP17504c) western blot analysis in ZR-75-1 cell line lysates (35ug/lane). This demonstrates the MARCH10 antibody detected the MARCH10 protein (arrow).

Please note: All products are 'FOR RESEARCH USE ONLY. NOT FOR USE IN DIAGNOSTIC OR THERAPEUTIC PROCEDURES'.