

AOPEP Antibody (N-term)

Affinity Purified Rabbit Polyclonal Antibody (Pab)

Catalog # AP17505a

Product Information

Application	WB, E
Primary Accession	Q8N6M6
Other Accession	NP_001180259.1 , NP_001180258.1
Reactivity	Human
Host	Rabbit
Clonality	Polyclonal
Isotype	Rabbit IgG
Clone Names	RB37819
Calculated MW	93572
Antigen Region	215-242

Additional Information

Gene ID	84909
Other Names	Aminopeptidase O, AP-O, 3411-, AOPEP, C9orf3, ONPEP
Target/Specificity	This AOPEP antibody is generated from rabbits immunized with a KLH conjugated synthetic peptide between 215-242 amino acids from the N-terminal region of human AOPEP.
Dilution	WB~~1:1000 E~~Use at an assay dependent concentration.
Format	Purified polyclonal antibody supplied in PBS with 0.09% (W/V) sodium azide. This antibody is purified through a protein A column, followed by peptide affinity purification.
Storage	Maintain refrigerated at 2-8°C for up to 2 weeks. For long term storage store at -20°C in small aliquots to prevent freeze-thaw cycles.
Precautions	AOPEP Antibody (N-term) is for research use only and not for use in diagnostic or therapeutic procedures.

Protein Information

Name	AOPEP (HGNC:1361)
Synonyms	C9orf3, ONPEP
Function	Aminopeptidase which catalyzes the hydrolysis of amino acid residues from the N-terminus of peptide or protein substrates.

Cellular Location

Nucleus, nucleolus {ECO:0000250|UniProtKB:Q8BXQ6}

Background

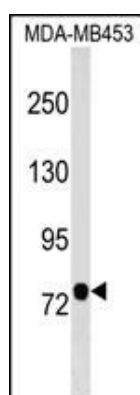
This gene encodes a member of the M1 zinc aminopeptidase family. The encoded protein is a zinc-dependent metallopeptidase that catalyzes the removal of an amino acid from the amino terminus of a protein or peptide. This protein may play a role in the generation of angiotensin IV. Alternate splicing results in multiple transcript variants.

References

Diaz-Perales, A., et al. J. Biol. Chem. 280(14):14310-14317(2005)

Humphray, S.J., et al. Nature 429(6990):369-374(2004)

Images



AOPEP Antibody (N-term) (Cat. #AP17505a) western blot analysis in MDA-MB453 cell line lysates (35ug/lane). This demonstrates the AOPEP antibody detected the AOPEP protein (arrow).

Please note: All products are 'FOR RESEARCH USE ONLY. NOT FOR USE IN DIAGNOSTIC OR THERAPEUTIC PROCEDURES'.