

# CCDC112 Antibody (N-term)

Affinity Purified Rabbit Polyclonal Antibody (Pab)

Catalog # AP17513a

## Product Information

---

<b>Application</b>	WB, E
<b>Primary Accession</b>	<a href="#">Q8NEF3</a>
<b>Other Accession</b>	<a href="#">Q4R8R3</a> , <a href="#">NP_001035530.1</a> , <a href="#">NP_689762.2</a>
<b>Reactivity</b>	Human
<b>Predicted</b>	Monkey
<b>Host</b>	Rabbit
<b>Clonality</b>	Polyclonal
<b>Isotype</b>	Rabbit IgG
<b>Clone Names</b>	RB37835
<b>Calculated MW</b>	53565
<b>Antigen Region</b>	1-30

## Additional Information

---

<b>Gene ID</b>	153733
<b>Other Names</b>	Coiled-coil domain-containing protein 112, Mutated in bladder cancer protein 1, CCDC112, MBC1
<b>Target/Specificity</b>	This CCDC112 antibody is generated from rabbits immunized with a KLH conjugated synthetic peptide between 1-30 amino acids from the N-terminal region of human CCDC112.
<b>Dilution</b>	WB~~1:1000 E~~Use at an assay dependent concentration.
<b>Format</b>	Purified polyclonal antibody supplied in PBS with 0.09% (W/V) sodium azide. This antibody is purified through a protein A column, followed by peptide affinity purification.
<b>Storage</b>	Maintain refrigerated at 2-8°C for up to 2 weeks. For long term storage store at -20°C in small aliquots to prevent freeze-thaw cycles.
<b>Precautions</b>	CCDC112 Antibody (N-term) is for research use only and not for use in diagnostic or therapeutic procedures.

## Protein Information

---

<b>Name</b>	CCDC112
<b>Synonyms</b>	MBC1

**Cellular Location**

Cytoplasm, cytoskeleton, microtubule organizing center, centrosome, centriolar satellite

**Background**

---

The function of this protein remains unknown.

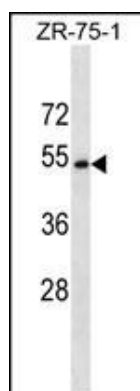
**References**

---

Lamesch, P., et al. Genomics 89(3):307-315(2007)

**Images**

---



CCDC112 Antibody (N-term) (Cat. #AP17513a) western blot analysis in ZR-75-1 cell line lysates (35ug/lane). This demonstrates the CCDC112 antibody detected the CCDC112 protein (arrow).

Please note: All products are 'FOR RESEARCH USE ONLY. NOT FOR USE IN DIAGNOSTIC OR THERAPEUTIC PROCEDURES'.