

# CRLF3 Antibody (C-term)

Affinity Purified Rabbit Polyclonal Antibody (Pab)

Catalog # AP17520b

## Product Information

---

Application	WB, E
Primary Accession	<a href="#">Q8IUI8</a>
Other Accession	<a href="#">Q9Z2L7</a> , <a href="#">NP_057070.3</a>
Reactivity	Human
Predicted	Mouse
Host	Rabbit
Clonality	Polyclonal
Isotype	Rabbit IgG
Clone Names	RB37846
Calculated MW	49766
Antigen Region	305-331

## Additional Information

---

Gene ID	51379
Other Names	Cytokine receptor-like factor 3, Cytokine receptor-like molecule 9, CREME-9, Cytokine receptor-related protein 4, Type I cytokine receptor-like factor p48, CRLF3, CREME9, CRLM9, CYTOR4, P48
Target/Specificity	This CRLF3 antibody is generated from rabbits immunized with a KLH conjugated synthetic peptide between 305-331 amino acids from the C-terminal region of human CRLF3.
Dilution	WB~~1:1000 E~~Use at an assay dependent concentration.
Format	Purified polyclonal antibody supplied in PBS with 0.09% (W/V) sodium azide. This antibody is purified through a protein A column, followed by peptide affinity purification.
Storage	Maintain refrigerated at 2-8°C for up to 2 weeks. For long term storage store at -20°C in small aliquots to prevent freeze-thaw cycles.
Precautions	CRLF3 Antibody (C-term) is for research use only and not for use in diagnostic or therapeutic procedures.

## Protein Information

---

Name	CRLF3
Synonyms	CREME9, CRLM9, CYTOR4, P48

<b>Function</b>	May play a role in the negative regulation of cell cycle progression.
<b>Cellular Location</b>	Cytoplasm. Note=The EGFP- and MYC-tagged protein has been shown to be cytoplasmic
<b>Tissue Location</b>	Expressed in several embryonic and adult tissues, including adult and fetal brain, liver, spleen and pancreas. Expressed in adult, but not fetal kidney. Expressed in skin and squamous cell carcinoma (SCC) and in several other cancer types. Also detected in lesion actinic keratosis (AK).

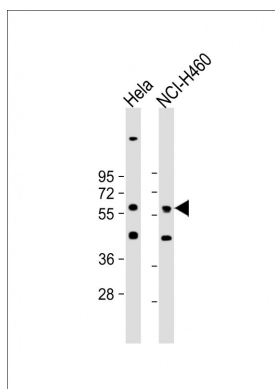
## Background

CRLF3 (Cytokine receptor-like factor 3) contains one fibronectin type-III domain. It is expressed in skin and squamous cell carcinoma (SCC) and in lesion actinic keratosis (AK).

## References

Johnatty, S.E., et al. PLoS Genet. 6 (7), E1001016 (2010) :  
 Zhao, J., et al. BMC Med. Genet. 11, 96 (2010) :  
 Yang, F., et al. Int. J. Biochem. Cell Biol. 41(11):2240-2250(2009)  
 Visser, R., et al. Am. J. Med. Genet. A 149A (4), 806-808 (2009) :  
 Gudbjartsson, D.F., et al. Nat. Genet. 40(5):609-615(2008)

## Images



All lanes : Anti-CRLF3 Antibody (C-term) at 1:1000 dilution  
 Lane 1: HeLa whole cell lysate Lane 2: NCI-H460 whole cell lysate  
 Lysates/proteins at 20 µg per lane. Secondary Goat Anti-Rabbit IgG, (H+L), Peroxidase conjugated at 1/10000 dilution. Predicted band size : 50 kDa  
 Blocking/Dilution buffer: 5% NFDM/TBST.

Please note: All products are 'FOR RESEARCH USE ONLY. NOT FOR USE IN DIAGNOSTIC OR THERAPEUTIC PROCEDURES'.