

ZNF323 Antibody (Center)

Affinity Purified Rabbit Polyclonal Antibody (Pab)

Catalog # AP17548c

Product Information

Application	WB, E
Primary Accession	Q96LW9
Other Accession	NP_001128687.1 , NP_001128688.1
Reactivity	Human
Host	Rabbit
Clonality	Polyclonal
Isotype	Rabbit IgG
Clone Names	RB30421
Calculated MW	47293
Antigen Region	190-217

Additional Information

Gene ID	64288
Other Names	Zinc finger and SCAN domain-containing protein 31, Zinc finger protein 323, ZSCAN31, ZNF310P, ZNF323
Target/Specificity	This ZNF323 antibody is generated from rabbits immunized with a KLH conjugated synthetic peptide between 190-217 amino acids from the Central region of human ZNF323.
Dilution	WB~~1:1000 E~~Use at an assay dependent concentration.
Format	Purified polyclonal antibody supplied in PBS with 0.09% (W/V) sodium azide. This antibody is purified through a protein A column, followed by peptide affinity purification.
Storage	Maintain refrigerated at 2-8°C for up to 2 weeks. For long term storage store at -20°C in small aliquots to prevent freeze-thaw cycles.
Precautions	ZNF323 Antibody (Center) is for research use only and not for use in diagnostic or therapeutic procedures.

Protein Information

Name	ZSCAN31
Synonyms	ZNF310P, ZNF323
Function	May function as a transcription factor. May be involved in the development

of multiple embryonic organs.

Cellular Location

Nucleus.

Tissue Location

Expressed at high levels in the lung, liver, and kidney, while weakly expressed in intestine, brain, muscle, cholecyst, heart, and pancreas.

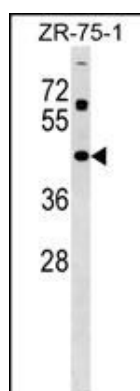
Background

ZNF323 is a member of the subfamily of C2H2 Kruppel-like zinc finger transcription factors that have a SCAN box domain (Pi et al., 2002 [PubMed 12147252]).

References

Pi, H., et al. Biochem. Biophys. Res. Commun. 296(1):206-213(2002)

Images



ZNF323 Antibody (Center) (Cat. #AP17548c) western blot analysis in ZR-75-1 cell line lysates (35ug/lane). This demonstrates the ZNF323 antibody detected the ZNF323 protein (arrow).

Please note: All products are 'FOR RESEARCH USE ONLY. NOT FOR USE IN DIAGNOSTIC OR THERAPEUTIC PROCEDURES'.