

CRB3 Antibody (Center)

Affinity Purified Rabbit Polyclonal Antibody (Pab)

Catalog # AP17560c

Product Information

Application	WB, E
Primary Accession	Q9BUF7
Other Accession	Q8QZT4 , NP_631900.1 , NP_777377.1
Reactivity	Human, Mouse
Host	Rabbit
Clonality	Polyclonal
Isotype	Rabbit IgG
Clone Names	RB36946
Calculated MW	12854
Antigen Region	67-95

Additional Information

Gene ID	92359
Other Names	Protein crumbs homolog 3, CRB3
Target/Specificity	This CRB3 antibody is generated from rabbits immunized with a KLH conjugated synthetic peptide between 67-95 amino acids from the Central region of human CRB3.
Dilution	WB~~1:1000 E~~Use at an assay dependent concentration.
Format	Purified polyclonal antibody supplied in PBS with 0.05% (V/V) Proclin 300. This antibody is purified through a protein A column, followed by peptide affinity purification.
Storage	Maintain refrigerated at 2-8°C for up to 2 weeks. For long term storage store at -20°C in small aliquots to prevent freeze-thaw cycles.
Precautions	CRB3 Antibody (Center) is for research use only and not for use in diagnostic or therapeutic procedures.

Protein Information

Name	CRB3 (HGNC:20237)
Function	Involved in the establishment of cell polarity in mammalian epithelial cells (PubMed: 12771187 , PubMed: 14718572 , PubMed: 23439680). Regulates the morphogenesis of tight junctions (PubMed: 12771187 , PubMed: 14718572). Involved in promoting phosphorylation and cytoplasmic retention of

transcriptional coactivators YAP1 and WWTR1/TAZ which leads to suppression of TGF β 1-dependent transcription of target genes such as CCN2/CTGF, SERPINE1/PAI1, SNAI1/SNAIL1 and SMAD7 (By similarity).

Cellular Location

Apical cell membrane; Single-pass type I membrane protein. Cell junction, tight junction. Note=Localizes primarily to the apical membrane with a small fraction in the upper part of tight junctions of epithelial cells.

Tissue Location

Preferentially expressed in epithelial tissues (PubMed:14718572). Expressed at high levels in lung, kidney, and colon (PubMed:12527193, PubMed:14718572). Expressed at high levels in retina, colon and mammary glands (PubMed:12527193). Moderately expressed in liver, spleen, pancreas and prostate (PubMed:12527193). Moderately to weakly expressed in the placenta (PubMed:12527193, PubMed:14718572) Weakly expressed in skeletal muscle and small intestine (PubMed:14718572).

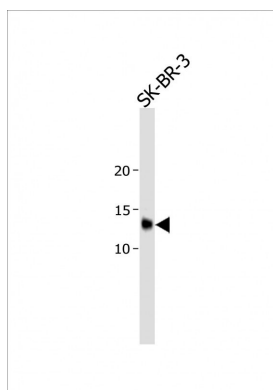
Background

This gene encodes a member of the Crumbs family of proteins. This protein may play a role in epithelial cell polarity and is associated with tight junctions at the apical surface of epithelial cells. Alternate transcriptional splice variants, encoding different isoforms, have been characterized. [provided by RefSeq].

References

Pardossi-Piquard, R., et al. Biochemistry 46(48):13704-13710(2007)
Fan, S., et al. J. Cell Biol. 178(3):387-398(2007)
Fogg, V.C., et al. J. Cell. Sci. 118 (PT 13), 2859-2869 (2005) :
Lemmers, C., et al. Mol. Biol. Cell 15(3):1324-1333(2004)
Roh, M.H., et al. J. Cell. Sci. 116 (PT 14), 2895-2906 (2003) :

Images



All lanes: Anti-CRB3 Antibody (Center) at 1:1000 dilution + SK-BR-3 whole cell lysate Lysates/proteins at 20 μ g per lane. Secondary: Goat Anti-Rabbit IgG, (H+L), Peroxidase conjugated (ASP1615) at 1/15000 dilution. Observed band size: 12 KDa Blocking/Dilution buffer: 5% NFDm/TBST.

Please note: All products are 'FOR RESEARCH USE ONLY. NOT FOR USE IN DIAGNOSTIC OR THERAPEUTIC PROCEDURES'.