

RAB20 Antibody (C-term)

Affinity Purified Rabbit Polyclonal Antibody (Pab)

Catalog # AP17593b

Product Information

Application	WB, E
Primary Accession	Q9NX57
Other Accession	NP_060287.1
Reactivity	Human
Host	Rabbit
Clonality	Polyclonal
Isotype	Rabbit IgG
Clone Names	RB37611
Calculated MW	26277
Antigen Region	202-229

Additional Information

Gene ID	55647
Other Names	Ras-related protein Rab-20, RAB20
Target/Specificity	This RAB20 antibody is generated from rabbits immunized with a KLH conjugated synthetic peptide between 202-229 amino acids from the C-terminal region of human RAB20.
Dilution	WB~~1:1000 E~~Use at an assay dependent concentration.
Format	Purified polyclonal antibody supplied in PBS with 0.09% (W/V) sodium azide. This antibody is purified through a protein A column, followed by peptide affinity purification.
Storage	Maintain refrigerated at 2-8°C for up to 2 weeks. For long term storage store at -20°C in small aliquots to prevent freeze-thaw cycles.
Precautions	RAB20 Antibody (C-term) is for research use only and not for use in diagnostic or therapeutic procedures.

Protein Information

Name	RAB20 (HGNC:18260)
Function	The small GTPases Rab are key regulators of intracellular membrane trafficking, from the formation of transport vesicles to their fusion with membranes. Rabs cycle between an inactive GDP-bound form and an active GTP-bound form that is able to recruit to membranes different sets of

downstream effectors directly responsible for vesicle formation, movement, tethering and fusion (By similarity). RAB20 plays a role in apical endocytosis/recycling. Plays a role in the maturation and acidification of phagosomes that engulf pathogens, such as *S.aureus* and *M.tuberculosis*. Plays a role in the fusion of phagosomes with lysosomes.

Cellular Location

Golgi apparatus. Cytoplasmic vesicle, phagosome Cytoplasmic vesicle, phagosome membrane; Lipid-anchor; Cytoplasmic side. Note=Highly enriched on apical endocytic structures in polarized epithelial cells of kidney proximal tubules (By similarity). Recruited to phagosomes containing *S.aureus* or *M.tuberculosis* (PubMed:21255211) {ECO:0000250|UniProtKB:P35295, ECO:0000269|PubMed:21255211}

Tissue Location

Low or absent expression in normal pancreas and stronger expression in 15 of 18 exocrine pancreatic adenocarcinomas (at protein level).

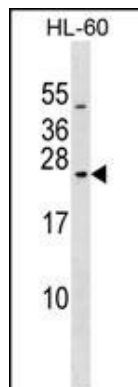
Background

RAB20 plays a role in apical endocytosis/recycling.

References

Rose, J.E., et al. Mol. Med. 16 (7-8), 247-253 (2010) :
Das Sarma, J., et al. Cell Commun. Adhes. 15(1):65-74(2008)
Amillet, J.M., et al. Hum. Pathol. 37(3):256-263(2006)
Pereira-Leal, J.B., et al. J. Mol. Biol. 313(4):889-901(2001)
Lutcke, A., et al. J. Cell. Sci. 107 (PT 12), 3437-3448 (1994) :

Images



RAB20 Antibody (C-term) (Cat. #AP17593b) western blot analysis in HL-60 cell line lysates (35ug/lane). This demonstrates the RAB20 antibody detected the RAB20 protein (arrow).

Please note: All products are 'FOR RESEARCH USE ONLY. NOT FOR USE IN DIAGNOSTIC OR THERAPEUTIC PROCEDURES'.