

# RPL10L Antibody (N-term)

Affinity Purified Rabbit Polyclonal Antibody (Pab)

Catalog # AP17603a

## Product Information

---

|                          |   |
|--------------------------|---|
| <b>Application</b>       | WB, E   |
| <b>Primary Accession</b> | <a href="#">Q96L21</a>  |
| <b>Other Accession</b>   | <a href="#">Q6PDV7</a> , <a href="#">Q29195</a> , <a href="#">Q6ZVV3</a> , <a href="#">Q4R7Y2</a> , <a href="#">P27635</a> , <a href="#">Q09533</a> , <a href="#">Q9XSI3</a> , <a href="#">P86048</a> , <a href="#">Q4R4D3</a> , <a href="#">Q2TBW8</a> , <a href="#">NP_542784.1</a> |
| <b>Reactivity</b>        | Human   |
| <b>Predicted</b>         | Bovine, Monkey, Mouse, C.Elegans, Pig, Rat  |
| <b>Host</b>              | Rabbit  |
| <b>Clonality</b>         | Polyclonal  |
| <b>Isotype</b>           | Rabbit IgG  |
| <b>Clone Names</b>       | RB37625   |
| <b>Calculated MW</b>     | 24519   |
| <b>Antigen Region</b>    | 9-35  |

## Additional Information

---

|                           |  |
|---------------------------|--|
| <b>Gene ID</b>            | 140801   |
| <b>Other Names</b>        | 60S ribosomal protein L10-like, RPL10L   |
| <b>Target/Specificity</b> | This RPL10L antibody is generated from rabbits immunized with a KLH conjugated synthetic peptide between 9-35 amino acids from the N-terminal region of human RPL10L.        |
| <b>Dilution</b>           | WB~~1:1000 E~~Use at an assay dependent concentration.   |
| <b>Format</b>             | Purified polyclonal antibody supplied in PBS with 0.09% (W/V) sodium azide. This antibody is purified through a protein A column, followed by peptide affinity purification. |
| <b>Storage</b>            | Maintain refrigerated at 2-8°C for up to 2 weeks. For long term storage store at -20°C in small aliquots to prevent freeze-thaw cycles.                                      |
| <b>Precautions</b>        | RPL10L Antibody (N-term) is for research use only and not for use in diagnostic or therapeutic procedures.   |

## Protein Information

---

|                 |  |
|-----------------|--|
| <b>Name</b>     | RPL10L {ECO:0000303 PubMed:12490704, ECO:0000312 HGNC:HGNC:17976}    |
| <b>Function</b> | Testis-specific component of the ribosome, which is required for the |

transition from prophase to metaphase in male meiosis I (By similarity). Compensates for the inactivated X-linked RPL10 paralog during spermatogenesis (PubMed:[12490704](#)). The ribosome is a large ribonucleoprotein complex responsible for the synthesis of proteins in the cell (PubMed:[23636399](#), PubMed:[25901680](#), PubMed:[32669547](#)). The male germ cell-specific ribosome displays a ribosomal polypeptide exit tunnel of distinct size and charge states compared with the classical ribosome (By similarity). It is responsible for regulating the biosynthesis and folding of a subset of male germ-cell-specific proteins that are essential for the formation of sperm (By similarity).

**Cellular Location** Cytoplasm

**Tissue Location** Almost testis-specific (PubMed:12490704, PubMed:19333399, PubMed:28502657). Also expressed in pre- and postmenopausal ovary (PubMed:19333399).

## Background

---

This gene encodes a protein sharing sequence similarity with ribosomal protein L10. It is not currently known whether the encoded protein is a functional ribosomal protein or whether it has evolved a function that is independent of the ribosome. This gene is intronless.

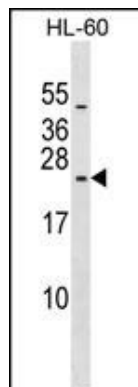
## References

---

Balasubramanian, S., et al. Genome Biol. 10 (1), R2 (2009) :  
Uechi, T., et al. Nucleic Acids Res. 30(24):5369-5375(2002)  
Simpson, J.C., et al. EMBO Rep. 1(3):287-292(2000)

## Images

---



RPL10L Antibody (N-term) (Cat. #AP17603a) western blot analysis in HL-60 cell line lysates (35ug/lane). This demonstrates the RPL10L antibody detected the RPL10L protein (arrow).

Please note: All products are 'FOR RESEARCH USE ONLY. NOT FOR USE IN DIAGNOSTIC OR THERAPEUTIC PROCEDURES'.