

CDKL4 Antibody (C-term)

Affinity Purified Rabbit Polyclonal Antibody (Pab)

Catalog # AP17619b

Product Information

Application	WB, E
Primary Accession	Q5MAI5
Other Accession	NP_001009565.1
Reactivity	Human
Host	Rabbit
Clonality	Polyclonal
Isotype	Rabbit IgG
Clone Names	RB37672
Calculated MW	43384
Antigen Region	277-304

Additional Information

Gene ID	344387
Other Names	Cyclin-dependent kinase-like 4, CDKL4
Target/Specificity	This CDKL4 antibody is generated from rabbits immunized with a KLH conjugated synthetic peptide between 277-304 amino acids from the C-terminal region of human CDKL4.
Dilution	WB~~1:1000 E~~Use at an assay dependent concentration.
Format	Purified polyclonal antibody supplied in PBS with 0.09% (W/V) sodium azide. This antibody is purified through a protein A column, followed by peptide affinity purification.
Storage	Maintain refrigerated at 2-8°C for up to 2 weeks. For long term storage store at -20°C in small aliquots to prevent freeze-thaw cycles.
Precautions	CDKL4 Antibody (C-term) is for research use only and not for use in diagnostic or therapeutic procedures.

Protein Information

Name	CDKL4
Cellular Location	Cytoplasm.

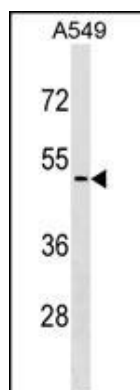
Background

Belongs to the protein kinase superfamily. CMGC Ser/Thr protein kinase family. CDC2/CDKX subfamily. Contains 1 protein kinase domain.

References

Russo, S., et al. Neurogenetics 10(3):241-250(2009)

Images



CDKL4 Antibody (C-term) (Cat. #AP17619b) western blot analysis in A549 cell line lysates (35ug/lane). This demonstrates the CDKL4 antibody detected the CDKL4 protein (arrow).

Please note: All products are 'FOR RESEARCH USE ONLY. NOT FOR USE IN DIAGNOSTIC OR THERAPEUTIC PROCEDURES'.