

# CLEC9A Antibody (Center)

Affinity Purified Rabbit Polyclonal Antibody (Pab)

Catalog # AP17684c

## Product Information

---

<b>Application</b>	WB, E
<b>Primary Accession</b>	<a href="#">Q6UXN8</a>
<b>Other Accession</b>	<a href="#">NP_997228.1</a>
<b>Reactivity</b>	Human
<b>Host</b>	Rabbit
<b>Clonality</b>	Polyclonal
<b>Isotype</b>	Rabbit IgG
<b>Clone Names</b>	RB37676
<b>Calculated MW</b>	27324
<b>Antigen Region</b>	146-173

## Additional Information

---

<b>Gene ID</b>	283420
<b>Other Names</b>	C-type lectin domain family 9 member A, CLEC9A
<b>Target/Specificity</b>	This CLEC9A antibody is generated from rabbits immunized with a KLH conjugated synthetic peptide between 146-173 amino acids from the Central region of human CLEC9A.
<b>Dilution</b>	WB~~1:1000 E~~Use at an assay dependent concentration.
<b>Format</b>	Purified polyclonal antibody supplied in PBS with 0.09% (W/V) sodium azide. This antibody is purified through a protein A column, followed by peptide affinity purification.
<b>Storage</b>	Maintain refrigerated at 2-8°C for up to 2 weeks. For long term storage store at -20°C in small aliquots to prevent freeze-thaw cycles.
<b>Precautions</b>	CLEC9A Antibody (Center) is for research use only and not for use in diagnostic or therapeutic procedures.

## Protein Information

---

<b>Name</b>	CLEC9A
<b>Function</b>	Functions as an endocytic receptor on a small subset of myeloid cells specialized for the uptake and processing of material from dead cells. Recognizes filamentous form of actin in association with particular actin-binding domains of cytoskeletal proteins, including spectrin, exposed

when cell membranes are damaged, and mediate the cross-presentation of dead-cell associated antigens in a Syk-dependent manner.

**Cellular Location**

Membrane; Single- pass type II membrane protein

**Tissue Location**

In peripheral blood highly restricted on the surface of BDCA31(+) dendritic cells and on a small subset of CD14(+) and CD16(-) monocytes.

## Background

---

CLEC9A is a group V C-type lectin-like receptor (CLR) that functions as an activation receptor and is expressed on myeloid lineage cells (Huysamen et al., 2008 [PubMed 18408006]).

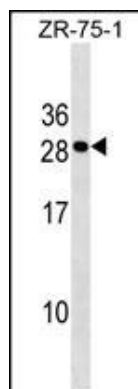
## References

---

Poulin, L.F., et al. J. Exp. Med. 207(6):1261-1271(2010)  
Sancho, D., et al. Nature 458(7240):899-903(2009)  
Caminschi, I., et al. Blood 112(8):3264-3273(2008)  
Huysamen, C., et al. J. Biol. Chem. 283(24):16693-16701(2008)  
Sancho, D., et al. J. Clin. Invest. 118(6):2098-2110(2008)

## Images

---



CLEC9A Antibody (Center) (Cat. #AP17684c) western blot analysis in ZR-75-1 cell line lysates (35ug/lane). This demonstrates the CLEC9A antibody detected the CLEC9A protein (arrow).

Please note: All products are 'FOR RESEARCH USE ONLY. NOT FOR USE IN DIAGNOSTIC OR THERAPEUTIC PROCEDURES'.