

MDH1B Antibody (Center)

Affinity Purified Rabbit Polyclonal Antibody (Pab)

Catalog # AP17695c

Product Information

Application	WB, E
Primary Accession	Q5I0G3
Other Accession	NP_001034934.1
Reactivity	Human
Host	Rabbit
Clonality	Polyclonal
Isotype	Rabbit IgG
Clone Names	RB37714
Calculated MW	58651
Antigen Region	304-332

Additional Information

Gene ID	130752
Other Names	Putative malate dehydrogenase 1B, 111-, MDH1B
Target/Specificity	This MDH1B antibody is generated from rabbits immunized with a KLH conjugated synthetic peptide between 304-332 amino acids from the Central region of human MDH1B.
Dilution	WB~~1:1000 E~~Use at an assay dependent concentration.
Format	Purified polyclonal antibody supplied in PBS with 0.09% (W/V) sodium azide. This antibody is purified through a protein A column, followed by peptide affinity purification.
Storage	Maintain refrigerated at 2-8°C for up to 2 weeks. For long term storage store at -20°C in small aliquots to prevent freeze-thaw cycles.
Precautions	MDH1B Antibody (Center) is for research use only and not for use in diagnostic or therapeutic procedures.

Protein Information

Name	MDH1B
------	-------

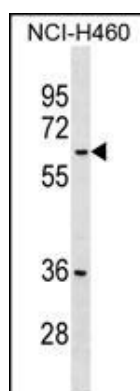
Background

MDH1B has been detected at the transcript level and is part of the malate dehydrogenase superfamily.

References

Rose, J.E., et al. Mol. Med. 16 (7-8), 247-253 (2010) :

Images



MDH1B Antibody (Center) (Cat. #AP17695c) western blot analysis in NCI-H460 cell line lysates (35ug/lane). This demonstrates the MDH1B antibody detected the MDH1B protein (arrow).

Please note: All products are 'FOR RESEARCH USE ONLY. NOT FOR USE IN DIAGNOSTIC OR THERAPEUTIC PROCEDURES'.