

MOSPD3 Antibody (Center)

Affinity Purified Rabbit Polyclonal Antibody (Pab)

Catalog # AP17696c

Product Information

Application	WB, E
Primary Accession	O75425
Other Accession	NP_001035186.1
Reactivity	Human
Host	Rabbit
Clonality	Polyclonal
Isotype	Rabbit IgG
Clone Names	RB37717
Calculated MW	25519
Antigen Region	86-113

Additional Information

Gene ID	64598
Other Names	Motile sperm domain-containing protein 3, MOSPD3
Target/Specificity	This MOSPD3 antibody is generated from rabbits immunized with a KLH conjugated synthetic peptide between 86-113 amino acids from the Central region of human MOSPD3.
Dilution	WB~~1:1000 E~~Use at an assay dependent concentration.
Format	Purified polyclonal antibody supplied in PBS with 0.09% (W/V) sodium azide. This antibody is purified through a protein A column, followed by peptide affinity purification.
Storage	Maintain refrigerated at 2-8°C for up to 2 weeks. For long term storage store at -20°C in small aliquots to prevent freeze-thaw cycles.
Precautions	MOSPD3 Antibody (Center) is for research use only and not for use in diagnostic or therapeutic procedures.

Protein Information

Name	MOSPD3
Cellular Location	Membrane; Multi-pass membrane protein

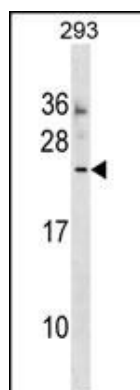
Background

This gene encodes a multi-pass membrane protein with a major sperm protein (MSP) domain. The deletion of a similar mouse gene is associated with defective cardiac development and neonatal lethality. Alternate transcriptional splice variants, encoding different isoforms, have been described.

References

Ganesh, S.K., et al. Nat. Genet. 41(11):1191-1198(2009)
Pall, G.S., et al. Genomics 84(6):1051-1059(2004)
Glockner, G., et al. Genome Res. 8(10):1060-1073(1998)

Images



MOSPD3 Antibody (Center) (Cat. #AP17696c) western blot analysis in 293 cell line lysates (35ug/lane). This demonstrates the MOSPD3 antibody detected the MOSPD3 protein (arrow).

Please note: All products are 'FOR RESEARCH USE ONLY. NOT FOR USE IN DIAGNOSTIC OR THERAPEUTIC PROCEDURES'.