

# MTHFSD Antibody (N-term)

Affinity Purified Rabbit Polyclonal Antibody (Pab)

Catalog # AP17699a

## Product Information

---

<b>Application</b>	WB, E
<b>Primary Accession</b>	<a href="#">Q2M296</a>
<b>Other Accession</b>	<a href="#">NP_073601.2</a>
<b>Reactivity</b>	Human
<b>Host</b>	Rabbit
<b>Clonality</b>	Polyclonal
<b>Isotype</b>	Rabbit IgG
<b>Clone Names</b>	RB37723
<b>Calculated MW</b>	42173
<b>Antigen Region</b>	43-69

## Additional Information

---

<b>Gene ID</b>	64779
<b>Other Names</b>	Methenyltetrahydrofolate synthase domain-containing protein, MTHFSD
<b>Target/Specificity</b>	This MTHFSD antibody is generated from rabbits immunized with a KLH conjugated synthetic peptide between 43-69 amino acids from the N-terminal region of human MTHFSD.
<b>Dilution</b>	WB~~1:1000 E~~Use at an assay dependent concentration.
<b>Format</b>	Purified polyclonal antibody supplied in PBS with 0.09% (W/V) sodium azide. This antibody is purified through a protein A column, followed by peptide affinity purification.
<b>Storage</b>	Maintain refrigerated at 2-8°C for up to 2 weeks. For long term storage store at -20°C in small aliquots to prevent freeze-thaw cycles.
<b>Precautions</b>	MTHFSD Antibody (N-term) is for research use only and not for use in diagnostic or therapeutic procedures.

## Protein Information

---

<b>Name</b>	MTHFSD
-------------	--------

## Background

---

This ATP and RNA binding protein may be involved in the folic acid biosynthetic process.

## References

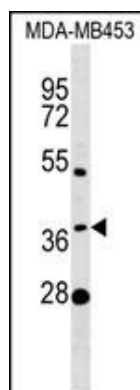
---

Bailey, S.D., et al. Diabetes Care 33(10):2250-2253(2010)

Talmud, P.J., et al. Am. J. Hum. Genet. 85(5):628-642(2009)

## Images

---



MTHFSD Antibody (N-term) (Cat. #AP17699a) western blot analysis in MDA-MB453 cell line lysates (35ug/lane). This demonstrates the MTHFSD antibody detected the MTHFSD protein (arrow).

Please note: All products are 'FOR RESEARCH USE ONLY. NOT FOR USE IN DIAGNOSTIC OR THERAPEUTIC PROCEDURES'.