

SR140 Antibody (N-term)

Affinity Purified Rabbit Polyclonal Antibody (Pab)

Catalog # AP17774a

Product Information

Application	WB, E
Primary Accession	O15042
Other Accession	NP_001073884.1
Reactivity	Human
Host	Rabbit
Clonality	Polyclonal
Isotype	Rabbit IgG
Clone Names	RB31199
Calculated MW	118292
Antigen Region	33-62

Additional Information

Gene ID	23350
Other Names	U2 snRNP-associated SURP motif-containing protein, 140 kDa Ser/Arg-rich domain protein, U2-associated protein SR140, U2SURP, KIAA0332, SR140
Target/Specificity	This SR140 antibody is generated from rabbits immunized with a KLH conjugated synthetic peptide between 33-62 amino acids from the N-terminal region of human SR140.
Dilution	WB~~1:1000 E~~Use at an assay dependent concentration.
Format	Purified polyclonal antibody supplied in PBS with 0.09% (W/V) sodium azide. This antibody is purified through a protein A column, followed by peptide affinity purification.
Storage	Maintain refrigerated at 2-8°C for up to 2 weeks. For long term storage store at -20°C in small aliquots to prevent freeze-thaw cycles.
Precautions	SR140 Antibody (N-term) is for research use only and not for use in diagnostic or therapeutic procedures.

Protein Information

Name	U2SURP
Synonyms	KIAA0332, SR140
Cellular Location	Nucleus.

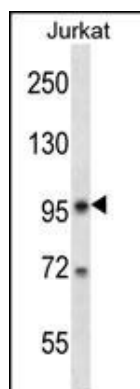
Background

SR140 belongs to the splicing factor SR family. Three isoforms have been identified.

References

Will, C.L., et al. EMBO J. 21(18):4978-4988(2002)

Images



SR140 Antibody (N-term) (Cat. #AP17774a) western blot analysis in Jurkat cell line lysates (35ug/lane). This demonstrates the SR140 antibody detected the SR140 protein (arrow).

Please note: All products are 'FOR RESEARCH USE ONLY. NOT FOR USE IN DIAGNOSTIC OR THERAPEUTIC PROCEDURES'.