

CELA1 Antibody (N-term)

Affinity Purified Rabbit Polyclonal Antibody (Pab)

Catalog # AP17787a

Product Information

Application	WB, E
Primary Accession	Q9UNI1
Other Accession	NP_001962.3
Reactivity	Human
Host	Rabbit
Clonality	Polyclonal
Isotype	Rabbit IgG
Clone Names	RB33125
Calculated MW	27798
Antigen Region	51-79

Additional Information

Gene ID	1990
Other Names	Chymotrypsin-like elastase family member 1, Elastase-1, Pancreatic elastase 1, CELA1, ELA1
Target/Specificity	This CELA1 antibody is generated from rabbits immunized with a KLH conjugated synthetic peptide between 51-79 amino acids from the N-terminal region of human CELA1.
Dilution	WB~~1:1000 E~~Use at an assay dependent concentration.
Format	Purified polyclonal antibody supplied in PBS with 0.09% (W/V) sodium azide. This antibody is purified through a protein A column, followed by peptide affinity purification.
Storage	Maintain refrigerated at 2-8°C for up to 2 weeks. For long term storage store at -20°C in small aliquots to prevent freeze-thaw cycles.
Precautions	CELA1 Antibody (N-term) is for research use only and not for use in diagnostic or therapeutic procedures.

Protein Information

Name	CELA1
Synonyms	ELA1
Function	Serine proteases that hydrolyze many proteins in addition to elastin.

Cellular Location

Secreted {ECO:0000250|UniProtKB:P00772}.

Tissue Location

Basal layers of epidermis (at protein level). Not expressed in the pancreas.

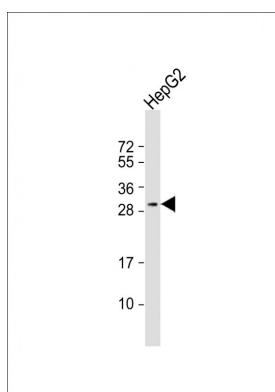
Background

Elastases form a subfamily of serine proteases that hydrolyze many proteins in addition to elastin. Humans have six elastase genes which encode the structurally similar proteins elastase 1, 2, 2A, 2B, 3A, and 3B. Unlike other elastases, pancreatic elastase 1 is not expressed in the pancreas. To date, elastase 1 expression has only been detected in skin keratinocytes. Clinical literature that describes human elastase 1 activity in the pancreas or fecal material is actually referring to chymotrypsin-like elastase family, member 3B.

References

Bailey, S.D., et al. Diabetes Care 33(10):2250-2253(2010)
Rose, J.E., et al. Mol. Med. 16 (7-8), 247-253 (2010) :
Roberts, K.E., et al. Gastroenterology 139(1):130-139(2010)
Talmud, P.J., et al. Am. J. Hum. Genet. 85(5):628-642(2009)
Talas, U., et al. J. Invest. Dermatol. 114(1):165-170(2000)

Images



Anti-CELA1 Antibody (N-term) at 1:1000 dilution + HepG2 whole cell lysate Lysates/proteins at 20 µg per lane. Secondary Goat Anti-Rabbit IgG, (H+L), Peroxidase conjugated at 1/10000 dilution. Predicted band size : 28 kDa Blocking/Dilution buffer: 5% NFDM/TBST.

Please note: All products are 'FOR RESEARCH USE ONLY. NOT FOR USE IN DIAGNOSTIC OR THERAPEUTIC PROCEDURES'.