

CHCH8 Antibody (C-term)

Affinity Purified Rabbit Polyclonal Antibody (Pab)

Catalog # AP17789b

Product Information

Application	WB, E
Primary Accession	Q9NYJ1
Other Accession	NP_057649.2
Reactivity	Human
Host	Rabbit
Clonality	Polyclonal
Isotype	Rabbit IgG
Clone Names	RB34176
Calculated MW	10134
Antigen Region	56-84

Additional Information

Gene ID	51287
Other Names	Cytochrome c oxidase assembly factor 4 homolog, mitochondrial, Coiled-coil-helix-coiled-coil-helix domain-containing protein 8, E2-induced gene 2 protein, COA4, CHCHD8, E2IG2
Target/Specificity	This CHCH8 antibody is generated from rabbits immunized with a KLH conjugated synthetic peptide between 56-84 amino acids from the C-terminal region of human CHCH8.
Dilution	WB~~1:1000 E~~Use at an assay dependent concentration.
Format	Purified polyclonal antibody supplied in PBS with 0.09% (W/V) sodium azide. This antibody is purified through a protein A column, followed by peptide affinity purification.
Storage	Maintain refrigerated at 2-8°C for up to 2 weeks. For long term storage store at -20°C in small aliquots to prevent freeze-thaw cycles.
Precautions	CHCH8 Antibody (C-term) is for research use only and not for use in diagnostic or therapeutic procedures.

Protein Information

Name	COA4
Synonyms	CHCHD8, E2IG2

Function	Putative COX assembly factor.
Cellular Location	Mitochondrion.

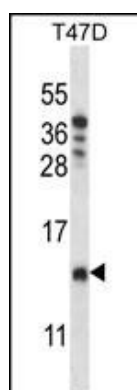
Background

The function of this protein remains unknown.

References

Charpentier, A.H., et al. Cancer Res. 60(21):5977-5983(2000)

Images



CHCH8 Antibody (C-term) (Cat. #AP17789b) western blot analysis in T47D cell line lysates (35ug/lane). This demonstrates the CHCH8 antibody detected the CHCH8 protein (arrow).

Please note: All products are 'FOR RESEARCH USE ONLY. NOT FOR USE IN DIAGNOSTIC OR THERAPEUTIC PROCEDURES'.