

Mouse Hoxb6 Antibody (N-term)

Affinity Purified Rabbit Polyclonal Antibody (Pab)

Catalog # AP17806a

Product Information

Application	WB, E
Primary Accession	P09023
Other Accession	P17509 , NP_032295.1
Reactivity	Mouse
Predicted	Human
Host	Rabbit
Clonality	Polyclonal
Isotype	Rabbit IgG
Clone Names	RB37120
Calculated MW	25310
Antigen Region	18-45

Additional Information

Gene ID	15414
Other Names	Homeobox protein Hox-B6, Homeobox protein Hox-22, Homeobox protein MH-22A, Hoxb6, Hox-22, Hoxb-6
Target/Specificity	This Mouse Hoxb6 antibody is generated from rabbits immunized with a KLH conjugated synthetic peptide between 18-45 amino acids from the N-terminal region of mouse Hoxb6.
Dilution	WB~~1:1000 E~~Use at an assay dependent concentration.
Format	Purified polyclonal antibody supplied in PBS with 0.09% (W/V) sodium azide. This antibody is purified through a protein A column, followed by peptide affinity purification.
Storage	Maintain refrigerated at 2-8°C for up to 2 weeks. For long term storage store at -20°C in small aliquots to prevent freeze-thaw cycles.
Precautions	Mouse Hoxb6 Antibody (N-term) is for research use only and not for use in diagnostic or therapeutic procedures.

Protein Information

Name	Hoxb6
Synonyms	Hox-2.2, Hoxb-6

Function	Sequence-specific transcription factor which is part of a developmental regulatory system that provides cells with specific positional identities on the anterior-posterior axis.
Cellular Location	Nucleus.

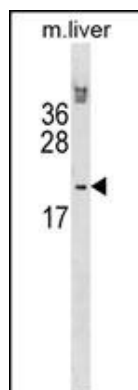
Background

Sequence-specific transcription factor which is part of a developmental regulatory system that provides cells with specific positional identities on the anterior-posterior axis.

References

Moore, B.A., et al. Mamm. Genome 21 (7-8), 350-360 (2010) :
Guo, G., et al. Dev. Cell 18(4):675-685(2010)
Voss, A.K., et al. Dev. Cell 17(5):674-686(2009)
Ribes, V., et al. Development 136(4):665-676(2009)
Grier, D.G., et al. Neonatology 96(1):50-60(2009)

Images



Mouse Hoxb6 Antibody (N-term) (Cat. #AP17806a)
western blot analysis in mouse liver tissue lysates
(35ug/lane). This demonstrates the Hoxb6 antibody
detected the Hoxb6 protein (arrow).

Please note: All products are 'FOR RESEARCH USE ONLY. NOT FOR USE IN DIAGNOSTIC OR THERAPEUTIC PROCEDURES'.