

# CCDC144NL Antibody (C-term)

Affinity Purified Rabbit Polyclonal Antibody (Pab)

Catalog # AP17821b

## Product Information

---

Application	WB, E
Primary Accession	<a href="#">Q6NUI1</a>
Other Accession	<a href="#">NP_001004306.1</a>
Reactivity	Human
Host	Rabbit
Clonality	Polyclonal
Isotype	Rabbit IgG
Clone Names	RB37533
Calculated MW	23810
Antigen Region	192-221

## Additional Information

---

Other Names	Putative coiled-coil domain-containing protein 144 N-terminal-like, CCDC144NL
Target/Specificity	This CCDC144NL antibody is generated from rabbits immunized with a KLH conjugated synthetic peptide between 192-221 amino acids from the C-terminal region of human CCDC144NL.
Dilution	WB~~1:1000 E~~Use at an assay dependent concentration.
Format	Purified polyclonal antibody supplied in PBS with 0.09% (W/V) sodium azide. This antibody is purified through a protein A column, followed by peptide affinity purification.
Storage	Maintain refrigerated at 2-8°C for up to 2 weeks. For long term storage store at -20°C in small aliquots to prevent freeze-thaw cycles.
Precautions	CCDC144NL Antibody (C-term) is for research use only and not for use in diagnostic or therapeutic procedures.

## Protein Information

---

Name	CCDC144NL
------	-----------

## Background

---

The function of this protein remains unknown.

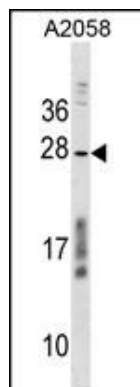
## References

---

Strausberg, R.L., et al. Proc. Natl. Acad. Sci. U.S.A. 99(26):16899-16903(2002)

## Images

---



CCDC144NL Antibody (C-term) (Cat. #AP17821b) western blot analysis in A2058 cell line lysates (35ug/lane). This demonstrates the CCDC144NL antibody detected the CCDC144NL protein (arrow).

Please note: All products are 'FOR RESEARCH USE ONLY. NOT FOR USE IN DIAGNOSTIC OR THERAPEUTIC PROCEDURES'.