

# WDR20 Antibody (N-term)

Affinity Purified Rabbit Polyclonal Antibody (Pab)

Catalog # AP17832a

## Product Information

---

Application	WB, E
Primary Accession	<a href="#">Q8TBZ3</a>
Other Accession	<a href="#">NP_653175.2</a>
Reactivity	Human
Host	Rabbit
Clonality	Polyclonal
Isotype	Rabbit IgG
Clone Names	RB37654
Calculated MW	62893
Antigen Region	5-32

## Additional Information

---

Gene ID	91833
Other Names	WD repeat-containing protein 20, Protein DMR, WDR20
Target/Specificity	This WDR20 antibody is generated from rabbits immunized with a KLH conjugated synthetic peptide between 5-32 amino acids from the N-terminal region of human WDR20.
Dilution	WB~~1:1000 E~~Use at an assay dependent concentration.
Format	Purified polyclonal antibody supplied in PBS with 0.09% (W/V) sodium azide. This antibody is purified through a protein A column, followed by peptide affinity purification.
Storage	Maintain refrigerated at 2-8°C for up to 2 weeks. For long term storage store at -20°C in small aliquots to prevent freeze-thaw cycles.
Precautions	WDR20 Antibody (N-term) is for research use only and not for use in diagnostic or therapeutic procedures.

## Protein Information

---

Name	WDR20
Function	Regulator of deubiquitinating complexes. Activates deubiquitinating activity of complexes containing USP12 (PubMed: <a href="#">20147737</a> , PubMed: <a href="#">27373336</a> ). Anchors at the base of the ubiquitin-contacting loop of USP12 and remotely modulates the catalytic center of the enzyme (PubMed: <a href="#">27373336</a> ). Regulates

shuttling of the USP12 deubiquitinase complex between the plasma membrane, cytoplasm and nucleus (PubMed:[30466959](#)).

## Cellular Location

Cytoplasm. Nucleus

## Background

---

This gene encodes a WD repeat-containing protein. Multiple alternatively spliced transcript variants have been found for this gene, but the full-length nature of some variants has not been defined.

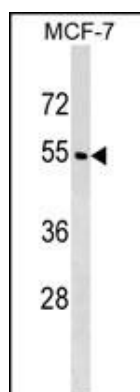
## References

---

Bailey, S.D., et al. Diabetes Care 33(10):2250-2253(2010)  
Kee, Y., et al. J. Biol. Chem. 285(15):11252-11257(2010)  
Talmud, P.J., et al. Am. J. Hum. Genet. 85(5):628-642(2009)  
Olsen, J.V., et al. Cell 127(3):635-648(2006)

## Images

---



WDR20 Antibody (N-term) (Cat. #AP17832a) western blot analysis in MCF-7 cell line lysates (35ug/lane). This demonstrates the WDR20 antibody detected the WDR20 protein (arrow).

Please note: All products are 'FOR RESEARCH USE ONLY. NOT FOR USE IN DIAGNOSTIC OR THERAPEUTIC PROCEDURES'.