

RNFT1 Antibody (N-term)

Affinity Purified Rabbit Polyclonal Antibody (Pab)

Catalog # AP17838A

Product Information

Application	WB, E
Primary Accession	Q5M7Z0
Other Accession	NP_057209.3
Reactivity	Human
Host	Rabbit
Clonality	Polyclonal
Isotype	Rabbit IgG
Clone Names	RB37754
Calculated MW	49710
Antigen Region	1-30

Additional Information

Gene ID	51136
Other Names	RING finger and transmembrane domain-containing protein 1, Protein PTD016, RNFT1
Target/Specificity	This RNFT1 antibody is generated from rabbits immunized with a KLH conjugated synthetic peptide between 1-30 amino acids from the N-terminal region of human RNFT1.
Dilution	WB~~1:1000 E~~Use at an assay dependent concentration.
Format	Purified polyclonal antibody supplied in PBS with 0.09% (W/V) sodium azide. This antibody is purified through a protein A column, followed by peptide affinity purification.
Storage	Maintain refrigerated at 2-8°C for up to 2 weeks. For long term storage store at -20°C in small aliquots to prevent freeze-thaw cycles.
Precautions	RNFT1 Antibody (N-term) is for research use only and not for use in diagnostic or therapeutic procedures.

Protein Information

Name	RNFT1
Function	E3 ubiquitin-protein ligase that acts in the endoplasmic reticulum (ER)-associated degradation (ERAD) pathway, which targets misfolded proteins that accumulate in the endoplasmic reticulum (ER) for ubiquitination and

subsequent proteasome-mediated degradation. Protects cells from ER stress-induced apoptosis.

Cellular Location

Endoplasmic reticulum membrane; Multi-pass membrane protein

Tissue Location

Expressed at highest levels in testis, lower levels in heart, liver, lung, and kidney (PubMed:17074343). Not detected in brain, ovary, and uterus (PubMed:17074343). Down-regulated in testis from patients with maturation arrest (MA) or Sertoli cell-only syndrome (SCOS) (PubMed:17074343). Ubiquitously expressed with high expression in testis (PubMed:27485036).

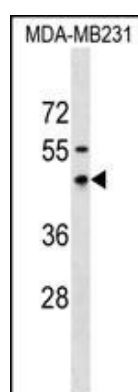
Background

PTD016 contains a RING-type zinc finger. The function of this protein is unknown.

References

Bailey, S.D., et al. Diabetes Care (2010) In press :
Talmud, P.J., et al. Am. J. Hum. Genet. 85(5):628-642(2009)

Images



RNFT1 Antibody (N-term) (Cat. #AP17838a) western blot analysis in MDA-MB231 cell line lysates (35ug/lane). This demonstrates the RNFT1 antibody detected the RNFT1 protein (arrow).

Please note: All products are 'FOR RESEARCH USE ONLY. NOT FOR USE IN DIAGNOSTIC OR THERAPEUTIC PROCEDURES'.