

PROM2 Antibody (Center)

Affinity Purified Rabbit Polyclonal Antibody (Pab)

Catalog # AP17843c

Product Information

Application	WB, E
Primary Accession	Q8N271
Other Accession	NP_001159449.1
Reactivity	Human
Host	Rabbit
Clonality	Polyclonal
Isotype	Rabbit IgG
Clone Names	RB37968
Calculated MW	91883
Antigen Region	440-466

Additional Information

Gene ID	150696
Other Names	Prominin-2, PROM-2, Prominin-like protein 2, hPROML2, PROM2, PROML2
Target/Specificity	This PROM2 antibody is generated from rabbits immunized with a KLH conjugated synthetic peptide between 440-466 amino acids from the Central region of human PROM2.
Dilution	WB~~1:1000 E~~Use at an assay dependent concentration.
Format	Purified polyclonal antibody supplied in PBS with 0.09% (W/V) sodium azide. This antibody is purified through a protein A column, followed by peptide affinity purification.
Storage	Maintain refrigerated at 2-8°C for up to 2 weeks. For long term storage store at -20°C in small aliquots to prevent freeze-thaw cycles.
Precautions	PROM2 Antibody (Center) is for research use only and not for use in diagnostic or therapeutic procedures.

Protein Information

Name	PROM2
Synonyms	PROML2
Cellular Location	Apical cell membrane; Multi-pass membrane protein. Basolateral cell membrane; Multi-pass membrane protein. Cell projection, microvillus

membrane; Multi-pass membrane protein. Cell projection, cilium membrane; Multi-pass membrane protein. Note=Colocalizes with PROM1 Associates with membrane in a cholesterol-dependent manner. Localizes to the apical and basolateral membranes of epithelial cells (By similarity).

Tissue Location

Present in saliva within small membrane particles (at protein level). Expressed in kidney, prostate, trachea, esophagus, salivary gland, thyroid gland, mammary gland adrenal gland, placenta, stomach, spinal cord and liver. In submucosal tumor, expressed in spindle-shaped or stellate stromal cells. Expressed in prostate cancer cell lines.

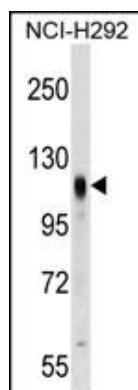
Background

This gene encodes a member of the prominin family of pentaspan membrane glycoproteins. The encoded protein localizes to basal epithelial cells and may be involved in the organization of plasma membrane microdomains. Alternative splicing results in multiple transcript variants.

References

Jaszai, J., et al. Histochem. Cell Biol. 133(5):527-539(2010)
Yao, J., et al. Oncol. Rep. 22(4):781-787(2009)
Jaszai, J., et al. Histochem. Cell Biol. 130(4):749-759(2008)
Fargeas, C.A., et al. J. Biol. Chem. 278(10):8586-8596(2003)

Images



PROM2 Antibody (Center) (Cat. #AP17843c) western blot analysis in NCI-H292 cell line lysates (35ug/lane). This demonstrates the PROM2 antibody detected the PROM2 protein (arrow).

Please note: All products are 'FOR RESEARCH USE ONLY. NOT FOR USE IN DIAGNOSTIC OR THERAPEUTIC PROCEDURES'.