

# RNASE11 Antibody (Center)

Affinity Purified Rabbit Polyclonal Antibody (Pab)

Catalog # AP17847c

## Product Information

---

<b>Application</b>	WB, E
<b>Primary Accession</b>	<a href="#">Q8TAA1</a>
<b>Other Accession</b>	<a href="#">NP_660293.1</a>
<b>Reactivity</b>	Human
<b>Host</b>	Rabbit
<b>Clonality</b>	Polyclonal
<b>Isotype</b>	Rabbit IgG
<b>Clone Names</b>	RB37982
<b>Calculated MW</b>	22427
<b>Antigen Region</b>	68-95

## Additional Information

---

<b>Gene ID</b>	122651
<b>Other Names</b>	Probable ribonuclease 11, RNase 11, 3127-, RNASE11, C14orf6
<b>Target/Specificity</b>	This RNASE11 antibody is generated from rabbits immunized with a KLH conjugated synthetic peptide between 68-95 amino acids from the Central region of human RNASE11.
<b>Dilution</b>	WB~~1:1000 E~~Use at an assay dependent concentration.
<b>Format</b>	Purified polyclonal antibody supplied in PBS with 0.09% (W/V) sodium azide. This antibody is purified through a protein A column, followed by peptide affinity purification.
<b>Storage</b>	Maintain refrigerated at 2-8°C for up to 2 weeks. For long term storage store at -20°C in small aliquots to prevent freeze-thaw cycles.
<b>Precautions</b>	RNASE11 Antibody (Center) is for research use only and not for use in diagnostic or therapeutic procedures.

## Protein Information

---

<b>Name</b>	RNASE11
<b>Synonyms</b>	C14orf6
<b>Cellular Location</b>	Secreted.

## Background

---

RNASE11 belongs to the pancreatic ribonuclease family.

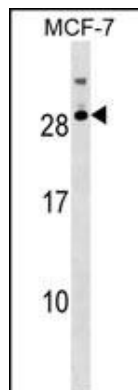
## References

---

Cho, S., et al. Genomics 85(2):208-220(2005)

## Images

---



RNASE11 Antibody (Center) (Cat. #AP17847c) western blot analysis in MCF-7 cell line lysates (35ug/lane). This demonstrates the RNASE11 antibody detected the RNASE11 protein (arrow).

Please note: All products are 'FOR RESEARCH USE ONLY. NOT FOR USE IN DIAGNOSTIC OR THERAPEUTIC PROCEDURES'.