

# THOC3 Antibody (N-term)

Affinity Purified Rabbit Polyclonal Antibody (Pab)

Catalog # AP17859a

## Product Information

---

<b>Application</b>	WB, E
<b>Primary Accession</b>	<a href="#">Q96J01</a>
<b>Other Accession</b>	<a href="#">Q8VE80</a> , <a href="#">Q29RH4</a> , <a href="#">NP_115737.1</a>
<b>Reactivity</b>	Human
<b>Predicted</b>	Bovine, Mouse
<b>Host</b>	Rabbit
<b>Clonality</b>	Polyclonal
<b>Isotype</b>	Rabbit IgG
<b>Clone Names</b>	RB38030
<b>Calculated MW</b>	38772
<b>Antigen Region</b>	71-98

## Additional Information

---

<b>Gene ID</b>	84321
<b>Other Names</b>	THO complex subunit 3, Tho3, TEX1 homolog, hTREX45, THOC3
<b>Target/Specificity</b>	This THOC3 antibody is generated from rabbits immunized with a KLH conjugated synthetic peptide between 71-98 amino acids from the N-terminal region of human THOC3.
<b>Dilution</b>	WB~~1:1000 E~~Use at an assay dependent concentration.
<b>Format</b>	Purified polyclonal antibody supplied in PBS with 0.09% (W/V) sodium azide. This antibody is purified through a protein A column, followed by peptide affinity purification.
<b>Storage</b>	Maintain refrigerated at 2-8°C for up to 2 weeks. For long term storage store at -20°C in small aliquots to prevent freeze-thaw cycles.
<b>Precautions</b>	THOC3 Antibody (N-term) is for research use only and not for use in diagnostic or therapeutic procedures.

## Protein Information

---

<b>Name</b>	THOC3
<b>Function</b>	Component of the THO subcomplex of the TREX complex which is thought to couple mRNA transcription, processing and nuclear export, and which specifically associates with spliced mRNA and not with unspliced pre-mRNA

(PubMed:[15833825](#), PubMed:[15998806](#), PubMed:[17190602](#)). Required for efficient export of polyadenylated RNA and spliced mRNA (PubMed:[23222130](#)). The THOC1-THOC2-THOC3 core complex alone is sufficient to bind export factor NXF1-NXT1 and promote ATPase activity of DDX39B (PubMed:[33191911](#)). TREX is recruited to spliced mRNAs by a transcription-independent mechanism, binds to mRNA upstream of the exon-junction complex (EJC) and is recruited in a splicing- and cap- dependent manner to a region near the 5' end of the mRNA where it functions in mRNA export to the cytoplasm via the TAP/NXF1 pathway (PubMed:[15833825](#), PubMed:[15998806](#), PubMed:[17190602](#)).

**Cellular Location** Nucleus. Nucleus speckle

## Background

---

TEX1 is part of the TREX (transcription/export) complex, which includes THO2 (MIM 300395), HPR1 (MIM 606930), ALY (MIM 604171), and UAP56 (MIM 142560).

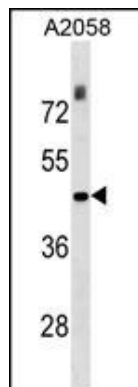
## References

---

Boyne, J.R., et al. PLoS Pathog. 4 (10), E1000194 (2008) :  
Cheng, H., et al. Cell 127(7):1389-1400(2006)  
Masuda, S., et al. Genes Dev. 19(13):1512-1517(2005)  
Guo, S., et al. Cancer Res. 65(8):3011-3016(2005)  
Strasser, K., et al. Nature 417(6886):304-308(2002)

## Images

---



THOC3 Antibody (N-term) (Cat. #AP17859a) western blot analysis in A2058 cell line lysates (35ug/lane). This demonstrates the THOC3 antibody detected the THOC3 protein (arrow).

Please note: All products are 'FOR RESEARCH USE ONLY. NOT FOR USE IN DIAGNOSTIC OR THERAPEUTIC PROCEDURES'.