

ZC3H7A Antibody (Center)

Affinity Purified Rabbit Polyclonal Antibody (Pab)

Catalog # AP17863c

Product Information

Application	WB, E
Primary Accession	Q8IWR0
Other Accession	NP_054872.2
Reactivity	Human
Host	Rabbit
Clonality	Polyclonal
Isotype	Rabbit IgG
Clone Names	RB38048
Calculated MW	110538
Antigen Region	563-589

Additional Information

Gene ID	29066
Other Names	Zinc finger CCCH domain-containing protein 7A, ZC3H7A, ZC3H7, ZC3HDC7
Target/Specificity	This ZC3H7A antibody is generated from rabbits immunized with a KLH conjugated synthetic peptide between 563-589 amino acids from the Central region of human ZC3H7A.
Dilution	WB~~1:1000 E~~Use at an assay dependent concentration.
Format	Purified polyclonal antibody supplied in PBS with 0.09% (W/V) sodium azide. This antibody is purified through a protein A column, followed by peptide affinity purification.
Storage	Maintain refrigerated at 2-8°C for up to 2 weeks. For long term storage store at -20°C in small aliquots to prevent freeze-thaw cycles.
Precautions	ZC3H7A Antibody (Center) is for research use only and not for use in diagnostic or therapeutic procedures.

Protein Information

Name	ZC3H7A
Synonyms	ZC3H7, ZC3HDC7
Function	May be a specific regulator of miRNA biogenesis. Binds to microRNAs MIR7-1, MIR16-2 and MIR29A hairpins recognizing the 3'- ATA(A/T)-5' motif in

the apical loop.

Cellular Location

Nucleus.

Background

ZC3H7A is part of a novel CCCH zinc finger protein family, which plays a role in the regulation of macrophage activation.

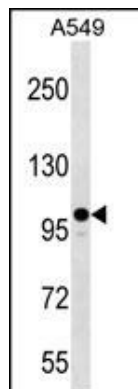
References

Newton-Cheh, C., et al. Nat. Genet. 41(4):399-406(2009)

Olsen, J.V., et al. Cell 127(3):635-648(2006)

Olsen, J.V., et al. Cell 127(3):635-648(2006)

Images



ZC3H7A Antibody (Center) (Cat. #AP17863c) western blot analysis in A549 cell line lysates (35ug/lane). This demonstrates the ZC3H7A antibody detected the ZC3H7A protein (arrow).

Please note: All products are 'FOR RESEARCH USE ONLY. NOT FOR USE IN DIAGNOSTIC OR THERAPEUTIC PROCEDURES'.