

CALCRL Antibody (Center)

Affinity Purified Rabbit Polyclonal Antibody (Pab)

Catalog # AP17873c

Product Information

Application	IHC-P-Leica, WB, E
Primary Accession	Q16602
Other Accession	Q8WN93 , NP_005786.1
Reactivity	Human, Rat, Mouse
Predicted	Pig
Host	Rabbit
Clonality	Polyclonal
Isotype	Rabbit IgG
Clone Names	RB22070
Calculated MW	52979
Antigen Region	340-367

Additional Information

Gene ID	10203
Other Names	Calcitonin gene-related peptide type 1 receptor, CGRP type 1 receptor, Calcitonin receptor-like receptor, CALCRL, CGRPR
Target/Specificity	This CALCRL antibody is generated from rabbits immunized with a KLH conjugated synthetic peptide between 340-367 amino acids from the Central region of human CALCRL.
Dilution	IHC-P-Leica~~1:500 WB~~1:1000 E~~Use at an assay dependent concentration.
Format	Purified polyclonal antibody supplied in PBS with 0.09% (W/V) sodium azide. This antibody is purified through a protein A column, followed by peptide affinity purification.
Storage	Maintain refrigerated at 2-8°C for up to 2 weeks. For long term storage store at -20°C in small aliquots to prevent freeze-thaw cycles.
Precautions	CALCRL Antibody (Center) is for research use only and not for use in diagnostic or therapeutic procedures.

Protein Information

Name	CALCRL (HGNC:16709)
Synonyms	CGRPR

Function	G protein-coupled receptor which specificity is determined by its interaction with receptor-activity-modifying proteins (RAMPs) (PubMed: 32296767 , PubMed: 33602864 , PubMed: 8626685). Together with RAMP1, form the receptor complex for calcitonin-gene-related peptides CALCA/CGRP1 and CALCB/CGRP2 (PubMed: 33602864). Together with RAMP2 or RAMP3, function as receptor complexes for adrenomedullin (ADM and ADM2) (PubMed: 32296767 , PubMed: 9620797). Ligand binding causes a conformation change that triggers signaling via guanine nucleotide-binding proteins (G proteins) and modulates the activity of downstream effectors. Activates cAMP-dependent pathway (PubMed: 32296767 , PubMed: 8626685).
Cellular Location	Cell membrane; Multi-pass membrane protein
Tissue Location	Predominantly expressed in the lung and heart.

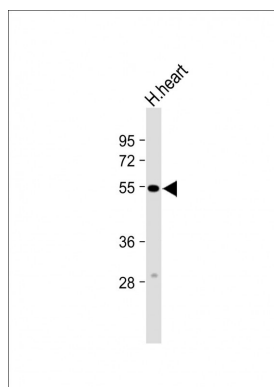
Background

Receptor for calcitonin-gene-related peptide (CGRP) together with RAMP1 and receptor for adrenomedullin together with RAMP2 or RAMP3 (By similarity). The activity of this receptor is mediated by G proteins which activate adenyl cyclase.

References

Rose, J.E., et al. Mol. Med. 16 (7-8), 247-253 (2010) :
 Kuwasako, K., et al. Biochem. Biophys. Res. Commun. 392(3):380-385(2010)
 Chang, C.L., et al. J. Biol. Chem. 285(2):1075-1080(2010)
 Barwell, J., et al. Peptides 31(1):170-176(2010)
 Yokoyama, K., et al. Nephron Clin Pract 115 (4), C237-C243 (2010) :

Images



Anti-CALCRL Antibody (Center) at 1:2000 dilution + Human heart lysate Lysates/proteins at 20 µg per lane. Secondary Goat Anti-Rabbit IgG, (H+L), Peroxidase conjugated at 1/10000 dilution. Predicted band size : 53 kDa Blocking/Dilution buffer: 5% NFDM/TBST.

Please note: All products are 'FOR RESEARCH USE ONLY. NOT FOR USE IN DIAGNOSTIC OR THERAPEUTIC PROCEDURES'.