

CECR6 Antibody (C-term)

Affinity Purified Rabbit Polyclonal Antibody (Pab)

Catalog # AP17883b

Product Information

Application	WB, E
Primary Accession	Q9BXQ6
Other Accession	NP_114096.1
Reactivity	Human, Mouse
Host	Rabbit
Clonality	Polyclonal
Isotype	Rabbit IgG
Clone Names	RB23126
Calculated MW	58425
Antigen Region	504-531

Additional Information

Gene ID	27439
Other Names	Cat eye syndrome critical region protein 6, CECR6
Target/Specificity	This CECR6 antibody is generated from rabbits immunized with a KLH conjugated synthetic peptide between 504-531 amino acids from the C-terminal region of human CECR6.
Dilution	WB~~1:1000 E~~Use at an assay dependent concentration.
Format	Purified polyclonal antibody supplied in PBS with 0.09% (W/V) sodium azide. This antibody is purified through a protein A column, followed by peptide affinity purification.
Storage	Maintain refrigerated at 2-8°C for up to 2 weeks. For long term storage store at -20°C in small aliquots to prevent freeze-thaw cycles.
Precautions	CECR6 Antibody (C-term) is for research use only and not for use in diagnostic or therapeutic procedures.

Protein Information

Name	TMEM121B (HGNC:1844)
Tissue Location	Widely expressed, especially in adult heart, brain, prostate, testes, peripheral blood leukocytes and fetal brain

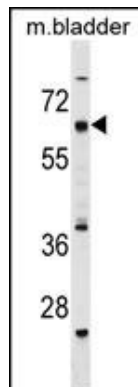
Background

The exact function of CECR6 remains unknown.

References

Davila, S., et al. Genes Immun. 11(3):232-238(2010)
Footz, T.K., et al. Genome Res. 11(6):1053-1070(2001)

Images



CECR6 Antibody (C-term) (Cat. #AP17883b) western blot analysis in mouse bladder tissue lysates (35ug/lane). This demonstrates the CECR6 antibody detected the CECR6 protein (arrow).

Please note: All products are 'FOR RESEARCH USE ONLY. NOT FOR USE IN DIAGNOSTIC OR THERAPEUTIC PROCEDURES'.