

CHCHD6 Antibody (Center)

Affinity Purified Rabbit Polyclonal Antibody (Pab)

Catalog # AP17891c

Product Information

Application	WB, E
Primary Accession	Q9BRQ6
Other Accession	NP_115719.1
Reactivity	Human
Host	Rabbit
Clonality	Polyclonal
Isotype	Rabbit IgG
Clone Names	RB26550
Calculated MW	26458
Antigen Region	136-165

Additional Information

Gene ID	84303
Other Names	MICOS complex subunit MIC25, Coiled-coil-helix cristae morphology protein 1, Coiled-coil-helix-coiled-coil-helix domain-containing protein 6, CHCHD6, CHCM1, MIC25
Target/Specificity	This CHCHD6 antibody is generated from rabbits immunized with a KLH conjugated synthetic peptide between 136-165 amino acids from the Central region of human CHCHD6.
Dilution	WB~~1:1000 E~~Use at an assay dependent concentration.
Format	Purified polyclonal antibody supplied in PBS with 0.09% (W/V) sodium azide. This antibody is purified through a protein A column, followed by peptide affinity purification.
Storage	Maintain refrigerated at 2-8°C for up to 2 weeks. For long term storage store at -20°C in small aliquots to prevent freeze-thaw cycles.
Precautions	CHCHD6 Antibody (Center) is for research use only and not for use in diagnostic or therapeutic procedures.

Protein Information

Name	CHCHD6
Synonyms	CHCM1, MIC25

Function	Component of the MICOS complex, a large protein complex of the mitochondrial inner membrane that plays crucial roles in the maintenance of crista junctions, inner membrane architecture, and formation of contact sites to the outer membrane.
Cellular Location	Mitochondrion inner membrane; Lipid-anchor. Mitochondrion

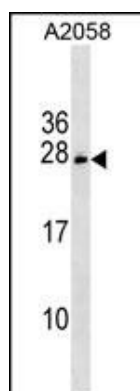
Background

The function of this protein remains unknown.

References

Rose, J.E., et al. Mol. Med. 16 (7-8), 247-253 (2010) :
Trynka, G., et al. Gut 58(8):1078-1083(2009)
Xie, J., et al. FEBS Lett. 581(18):3545-3549(2007)

Images



CHCHD6 Antibody (Center) (Cat. #AP17891c) western blot analysis in A2058 cell line lysates (35ug/lane). This demonstrates the CHCHD6 antibody detected the CHCHD6 protein (arrow).

Please note: All products are 'FOR RESEARCH USE ONLY. NOT FOR USE IN DIAGNOSTIC OR THERAPEUTIC PROCEDURES'.