

SLC4A9 Antibody (N-term)

Affinity Purified Rabbit Polyclonal Antibody (Pab)

Catalog # AP17903a

Product Information

Application	WB, E
Primary Accession	Q96Q91
Other Accession	NP_113655.2
Reactivity	Human
Host	Rabbit
Clonality	Polyclonal
Isotype	Rabbit IgG
Clone Names	RB28732
Calculated MW	108248
Antigen Region	2-30

Additional Information

Gene ID	83697
Other Names	Anion exchange protein 4, AE 4, Anion exchanger 4, Sodium bicarbonate cotransporter 5, Solute carrier family 4 member 9, SLC4A9, AE4, SBC5
Target/Specificity	This SLC4A9 antibody is generated from rabbits immunized with a KLH conjugated synthetic peptide between 2-30 amino acids from the N-terminal region of human SLC4A9.
Dilution	WB~~1:1000 E~~Use at an assay dependent concentration.
Format	Purified polyclonal antibody supplied in PBS with 0.09% (W/V) sodium azide. This antibody is purified through a protein A column, followed by peptide affinity purification.
Storage	Maintain refrigerated at 2-8°C for up to 2 weeks. For long term storage store at -20°C in small aliquots to prevent freeze-thaw cycles.
Precautions	SLC4A9 Antibody (N-term) is for research use only and not for use in diagnostic or therapeutic procedures.

Protein Information

Name	SLC4A9 (HGNC:11035)
Function	Electroneutral Cl(-)/HCO3(-) antiporter that favors chloride ion entry and efflux of hydrogencarbonate and sodium ion across the basolateral membrane and may participate in salivary secretion (PubMed: 27114614). Also

mediates Cl⁻/HCO₃⁻ exchange activity in the presence of K⁺ as well as Cs⁺, Li⁺, and Rb⁺ (By similarity). Does not contribute to Cl⁻/HCO₃⁻ exchanger in the apical membrane of the upper villous epithelium (By similarity).

Cellular Location

Basolateral cell membrane {ECO:0000250|UniProtKB:A0A494BA31}; Multi-pass membrane protein. Note=Localized in the basolateral membrane of the cortical collecting duct (CCD)and submandibular gland (SMG) duct {ECO:0000250|UniProtKB:A0A494BA31}

Tissue Location

Kidney specific. {ECO:0000269|PubMed:11305939, ECO:0000269|Ref.7}

Background

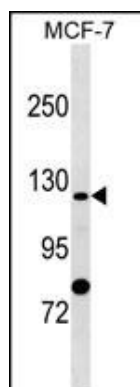
SLC4A9 is probable apical anion exchanger of the kidney cortex (By similarity).

References

Parker, M.D., et al. Biochem. Biophys. Res. Commun. 282(5):1103-1109(2001)

Lipovich, L., et al. Genome Biol. 2 (4), RESEARCH0011 (2001) :

Images



SLC4A9 Antibody (N-term) (Cat. #AP17903a) western blot analysis in MCF-7 cell line lysates (35ug/lane). This demonstrates the SLC4A9 antibody detected the SLC4A9 protein (arrow).

Please note: All products are 'FOR RESEARCH USE ONLY. NOT FOR USE IN DIAGNOSTIC OR THERAPEUTIC PROCEDURES'.